

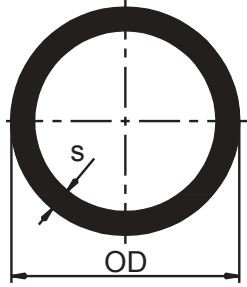
**Asahi/America**  
**Effective 07/15/05**  
Subject to change without notice

**Air Pro<sup>TM</sup>**  
**Compressed Air**  
**Piping System**  
**High Density Polyethylene**  
**Data Sheet**  
**071505**



35 Green Street, PO Box 653, Malden, MA 02148  
Tel: (781-321-5409 Fax: (781) 321-4421 Toll Free: (800) 343-3618  
[www.asahi-america.com](http://www.asahi-america.com) email: [asahi@asahi-america.com](mailto:asahi@asahi-america.com)  
Direct Sales: East(800)232-7244/Central(800)442-7244/West(800)282-7244

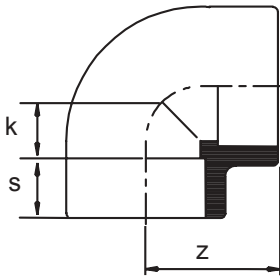
## AirPro Pipe (sold in 16.4 ft lengths)



Size (mm)	Size (inch)	OD (inch)	s (inch)	Weight (lb/ft)	Part#
20	1/2	0.79	0.110	0.10	5802005
25	3/4	0.98	0.138	0.16	5802007
32	1	1.26	0.173	0.26	5802010
40	1-1/4	1.57	0.217	0.40	5802012
50	1-1/2	1.97	0.272	0.63	5802015
63	2	2.48	0.339	0.99	5802020
90	3	3.54	0.484	2.01	5802030
110	4	4.33	0.594	3.01	5802040
<b>Butt Fusion Only</b>					
160	6	6.30	0.575	4.48	5803060
200	8	7.87	0.717	6.99	5803080
250	10	9.84	0.894	10.89	5803010
315	12	12.40	1.126	17.21	5803120

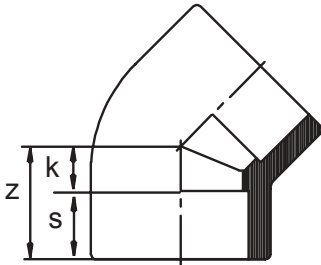
AirPro system sizes 20-110mm are **blue**, SDR 7.4 and rated at 230psi.  
AirPro Systems 160-312mm are **black standard**, SDR 11 and rated at 150psi.  
**Blue** available upon request.

## Socket 90



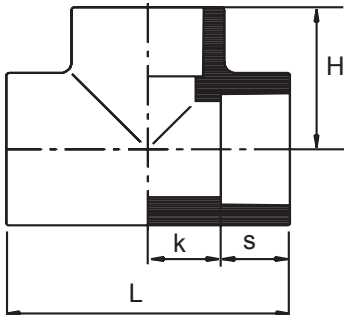
Size (mm)	Size (inch)	z (inch)	s (inch)	k (inch)	Part#
20	1/2	1.177	0.626	0.551	5805005
25	3/4	1.378	0.709	0.669	5805007
32	1	1.547	0.760	0.787	5805010
40	1-1/4	1.815	0.831	0.984	5805012
50	1-1/2	2.055	0.953	1.102	5805015
63	2	2.421	1.043	1.378	5805020
90	3	3.311	1.382	1.929	5805030
110	4	3.937	1.693	2.244	5805040

## Socket 45



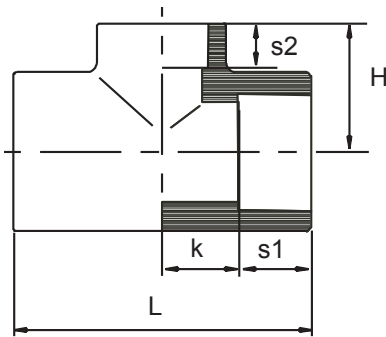
Size (mm)	Size (inch)	z (inch)	s (inch)	k (inch)	Part#
20	1/2	1.063	0.630	0.433	5808005
25	3/4	1.240	0.689	0.551	5808007
32	1	1.468	0.799	0.669	5808010
40	1-1/4	1.673	0.846	0.827	5808012
50	1-1/2	1.984	0.961	1.024	5808015
63	2	2.402	1.102	1.299	5808020
90	3	3.256	1.445	1.811	5808030
110	4	3.886	1.681	2.205	5808040

## Socket Tee



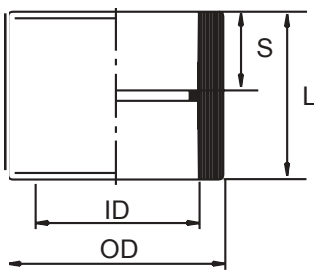
Size (mm)	Size (inch)	L (inch)	H (inch)	s (inch)	k (inch)	Part#
20	1/2	2.362	1.177	0.626	0.551	5820005
25	3/4	2.756	1.378	0.748	0.630	5820007
32	1	3.126	1.547	0.760	0.787	5820010
40	1-1/4	3.701	1.831	0.846	0.984	5820012
50	1-1/2	4.252	2.134	0.972	1.161	5820015
63	2	4.933	2.461	1.142	1.319	5820020
90	3	7.268	3.594	1.488	2.106	5820030
110	4	8.150	4.075	1.654	2.421	5820040

## Socket Reducing Tee



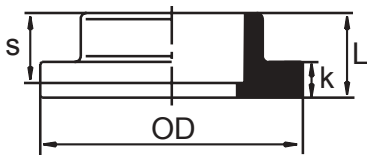
Size (mm)	Size (inch)	L (inch)	H (inch)	s1 (inch)	s2 (inch)	k (inch)	Part#
25/20	3/4x1/2	2.657	1.240	0.720	0.618	0.608	5824101
32/20	1x1/2	3.094	1.551	0.776	0.610	0.772	5824130
32/25	1x3/4	3.094	1.535	0.776	0.689	0.772	5824131
40/20	1-1/4x1/2	3.504	1.772	0.843	0.618	0.909	5824166
40/25	1-1/4x3/4	3.476	1.724	0.858	0.717	0.880	5824167
40/32	1-1/4x1	3.583	1.772	0.846	0.748	0.945	5824168
50/20	1-1/2x1/2	4.213	1.949	1.012	0.622	1.094	5824208
50/25	1-1/2x3/4	4.213	1.996	0.992	0.705	1.114	5824210
50/32	1-1/2x1	4.213	2.067	0.945	0.748	1.161	5824211
50/40	1-1/2x1-1/4	4.213	2.067	0.965	0.827	1.142	5824212
63/25	2x3/4	5.079	2.559	1.126	0.709	1.413	5824248
63/32	2x1	5.059	2.559	1.126	0.748	1.404	5824249
63/40	2x1-1/4	5.059	2.539	1.126	0.846	1.404	5824250
63/50	2x1-1/2	5.059	2.539	1.126	0.945	1.404	5824251

## Socket Coupling



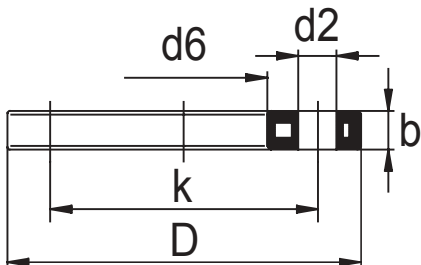
Size (mm)	Size (inch)	L (inch)	OD (inch)	ID (inch)	s (inch)	Part#
20	1/2	1.378	1.181	0.787	0.634	5816005
25	3/4	1.535	1.374	0.984	0.709	5816007
32	1	1.677	1.681	1.260	0.787	5816010
40	1-1/4	1.811	2.035	1.575	0.866	5816012
50	1-1/2	2.024	2.520	1.968	0.965	5816015
63	2	2.335	3.169	2.480	1.110	5816020
90	3	3.059	4.496	3.543	1.378	5816030
110	4	3.543	5.244	4.331	1.681	5816040

## Socket Stub End



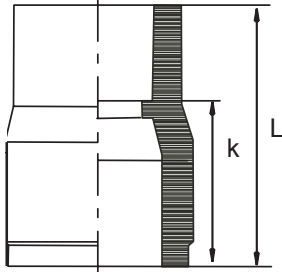
Size (mm)	Size (inch)	L (inch)	OD (inch)	s (inch)	k (inch)	Part#
20	1/2	0.827	1.772	0.630	0.382	5833005
25	3/4	0.906	2.283	0.669	0.374	5833007
32	1	0.984	2.677	0.748	0.382	5833010
40	1-1/4	1.043	3.071	0.866	0.433	5833012
50	1-1/2	1.181	3.465	0.941	0.472	5833015
63	2	1.319	4.016	1.083	0.543	5833020
90	3	1.654	5.433	1.358	0.630	5833030
110	4	1.890	6.220	1.614	0.736	5833040

## PPG Backing Ring



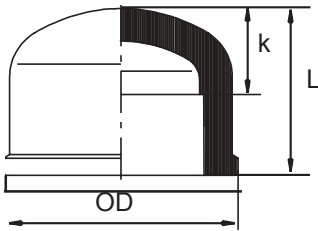
Size (mm)	Size (inch)	D (inch)	k (inch)	d2 (inch)	d6 (inch)	b (inch)	# Holes	Part#
20	1/2	3.740	2.380	0.630	1.102	0.472	4	5046005
25	3/4	4.016	2.750	0.630	1.339	0.472	4	5046007
32	1	4.488	3.120	0.630	1.654	0.630	4	5046010
40	1-1/4	5.118	3.500	0.630	2.008	0.630	4	5046012
50	1-1/2	5.236	3.880	0.630	2.441	0.709	4	5046015
63	2	6.378	4.750	0.787	3.071	0.709	4	5046020
90	3	7.638	6.000	0.787	4.370	0.709	8	5046030
110	4	9.016	7.500	0.787	5.236	0.709	8	5046040

## Spigot x Socket Reducing Bushing



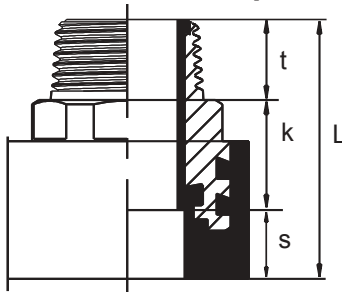
Size (mm)	Size (inch)	L (inch)	s (inch)	k (inch)	Part#
25/20	3/4x1/2	1.496	0.618	0.878	5829101
32/20	1x1/2	1.732	0.614	1.118	5829130
32/25	1x3/4	1.732	0.697	1.035	5829131
40/20	1-1/4x1/2	1.949	0.61	1.339	5829166
40/25	1-1/4x3/4	1.949	0.689	1.260	5829167
40/32	1-1/4x1	1.968	0.78	1.189	5829168
50/20	1-1/2x1/2	2.165	0.646	1.52	5829208
50/25	1-1/2x3/4	2.138	0.697	1.441	5829210
50/32	1-1/2x1	2.146	0.701	1.445	5829211
50/40	1-1/2x1-1/4	2.126	1.004	1.122	5829212
63/25	2x3/4	2.520	0.709	1.811	5829248
63/32	2x1	2.520	0.787	1.732	5829249
63/40	2x1-1/4	2.500	0.827	1.673	5829250
63/50	2x1-1/2	2.520	0.965	1.555	5829251
90/63	3x2	3.366	1.1902	2.264	5829338
110/63	4x2	3.465	1.122	2.343	5829420
110/90	4x3	3.445	1.476	1.968	5829422

## Socket Cap



Size (mm)	Size (inch)	OD (inch)	L (inch)	k (inch)	Part#
20	1/2	1.280	1.063	0.445	5812005
25	3/4	1.484	1.201	0.587	5812007
32	1	1.831	1.358	0.661	5812010
40	1-1/4	2.283	1.496	0.886	5812012
50	1-1/2	2.756	1.850	1.161	5812015
63	2	3.406	2.362	1.583	5812020
90	3	4.685	3.150	2.504	5812030
110	4	5.512	3.701	3.004	5812040

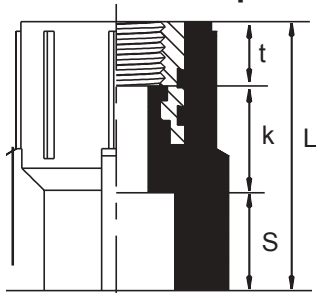
## Socket MNPT Adapter



Size (mm)	Size (inch)	L (inch)	s (inch)	k (inch)	t (inch)	Part#
20	1/2	2.244	0.591	1.043	0.610	5859005
25	3/4	2.402	0.669	1.102	0.669	5859007
32	1	2.598	0.709	1.181	0.709	5859010
40	1-1/4	2.795	0.827	1.142	0.827	5859012
50	1-1/2	3.031	0.945	1.142	0.945	5859015
63	2	3.268	1.083	1.102	1.083	5859020

- Nickel plated brass threads  
- 230 psi rated

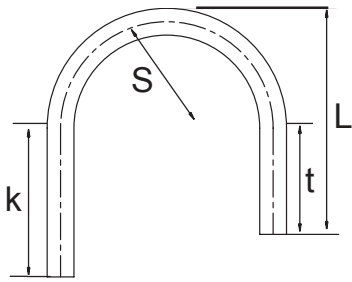
## Socket FNPT Adapter



Size (mm)	Size (inch)	L (inch)	s (inch)	k (inch)	t (inch)	Part#
20	1/2	1.598	0.62	0.386	0.591	5853005
25	3/4	1.606	0.62	0.386	0.709	5853007
32	1	1.850	0.71	0.386	0.787	5853010
40	1-1/4	1.949	0.79	0.386	0.827	5853012
50	1-1/2	2.268	0.91	0.386	1.004	5853015
63	2	2.567	1.04	0.386	1.142	5853020

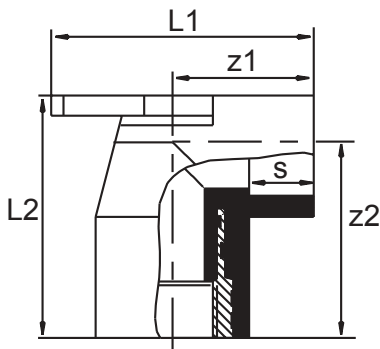
- Nickel plated brass threads  
- 230 psi rated

## Spigot Gooseneck



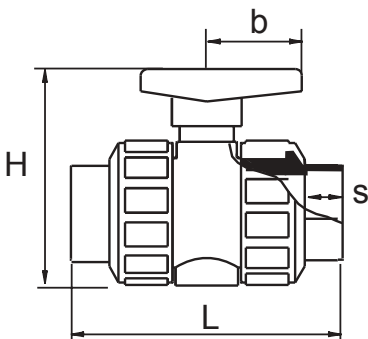
Size (mm)	Size (inch)	L (inch)	S (inch)	k (inch)	t (inch)	Part#
20	1/2	10	5	7	5	5835005
25	3/4	9	5	7	4	5835007
32	1	10	5	7	5	5835010

## AirPro Socket 90 x FNPT w/ MTG Bracket



Size (mm)	Size (inch)	L1 (inch)	L2 (inch)	z1 (inch)	z2 (inch)	s (inch)	Part#
20	1/2	2.559	2.362	1.398	1.772	0.551	5857005

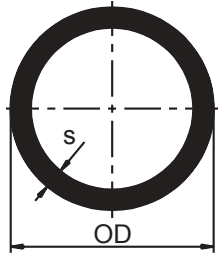
## Socket Ball Valve



Size (mm)	Size (inch)	L (inch)	H (inch)	b (inch)	s (inch)	Part#
20	1/2	3.787	1.890	1.673	0.571	5801005
25	3/4	4.370	2.126	2.165	0.630	5801007
32	1	4.724	2.244	2.165	0.709	5801010
40	1-1/4	5.433	3.031	2.559	0.807	5801012
50	1-1/2	6.339	3.465	2.953	1.071	5801015
63	2	7.480	3.760	3.425	1.457	5801020
90	3	11.181	6.220	5.315	1.398	5801030

AirPro Ball Valves sizes 20-63mm are rated 230psi.  
AirPro Ball Valves Sizes 90-110mm are rated 150psi.

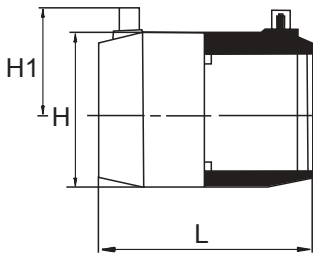
## AirPro Pipe (sold in 16.4 ft lengths)



Size (mm)	Size (inch)	OD (inch)	s (inch)	Weight (lb/ft)	Part#
160	6	6.30	0.575	4.48	5803060
200	8	7.87	0.717	6.99	5803080
250	10	9.84	0.894	10.89	5803100
315	12	12.40	1.126	17.21	5803120

AirPro Pipe Systems 160-315mm are black, SDR 11 and rated at 160psi.  
Blue Air Pro pipe available upon request fittings remain black 160-315.

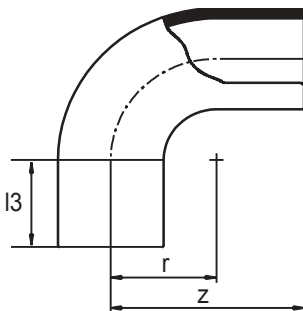
## Electrofusion Coupling



Size (mm)	Size (inch)	L (inch)	H (inch)	H1 (inch)	Part#
20	1/2	2.953	1.181	1.437	5817005
25	3/4	3.189	1.378	1.457	5817007
32	1	3.504	1.654	1.693	5817010
40	1-1/4	3.898	2.087	1.929	5817012
50	1-1/2	4.370	2.638	2.087	5817015
63	2	5.000	3.268	2.205	5817020
90	3	5.591	4.528	2.913	5817030
110	4	5.984	5.512	3.268	5817040
160	6	7.165	7.874	4.252	5817060
200	8	8.543	9.646	5.079	5817080
250	10	9.449	12.205	6.260	5817100
315	12	10.236	15.354	7.835	5817120

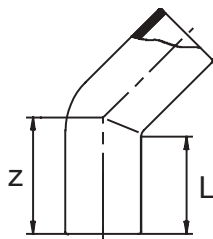
Systems w/electrofusion coupling are rated at 150 psi.

## Elongated 90



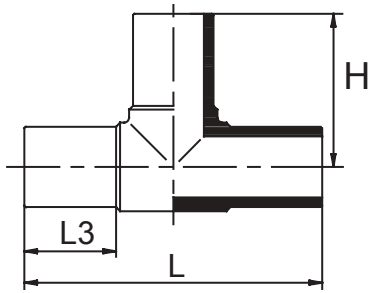
Size (mm)	Size (inch)	z (inch)	r (inch)	I3 (inch)	Part#
160	6	12.638	6.535	6.102	5811060
200	8	14.882	8.189	6.693	5811080
250	10	17.323	10.039	7.677	5811100
315	12	21.260	12.480	8.661	5811120

## Elongated 45



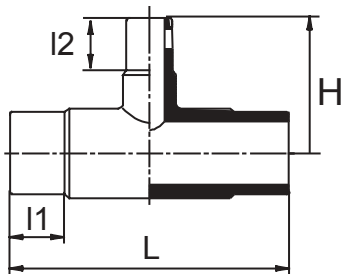
Size (mm)	Size (inch)	z (inch)	L (inch)	Part#
160	6	6.161	4.587	5809060
200	8	6.772	4.803	5809080
250	10	8.543	6.220	5809100
315	12	9.882	6.968	5809120

## Elongated Tee



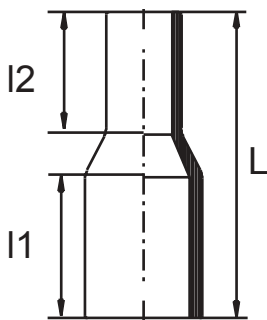
Size (mm)	Size (inch)	L (inch)	H (inch)	I3 (inch)	Part#
160	6	16.063	7.972	3.937	5823060
200	8	21.653	10.827	5.315	5823080
250	10	24.488	12.205	5.827	5823100
315	12	29.646	14.764	6.693	5823120

## Elongated Reducing Tee



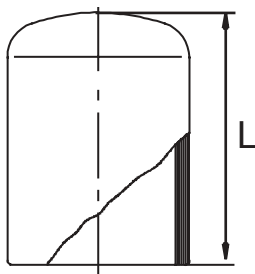
Size (mm)	Size (inch)	L (inch)	H (inch)	I1 (inch)	I2 (inch)	Part#
160/110	6x4	11.417	7.618	3.858	3.268	5825532
200/110	8x4	21.653	9.449	5.276	4.055	5825585
200/160	8x6	21.653	10.433	5.276	4.488	5825627
315/110	12x4	21.496	11.417	6.693	3.937	5825628
315/200	12x8	22.638	12.205	6.693	4.724	5825660
315/250	12x10	26.378	13.110	6.693	5.905	5825673

## Elongated Conc. Reducer



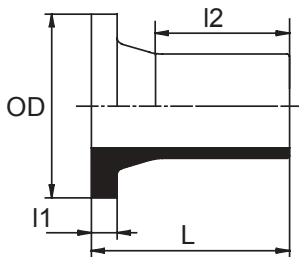
Size (mm)	Size (inch)	L (inch)	L1 (inch)	L2 (inch)	Part#
160/110	6x4	8.740	3.858	3.465	5831532
200/160	8x6	9.921	4.409	4.016	5831585
250/160	10x6	12.362	6.102	4.449	5831627
250/200	10x8	12.362	6.102	4.921	5831628
315/200	12x8	14.764	7.047	5.236	5831660
315/250	12x10	14.764	6.693	6.102	5831673

## Elongated Cap



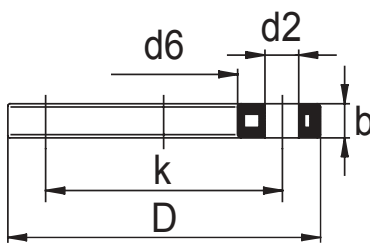
Size (mm)	Size (inch)	L (inch)	Part#
160	6	6.594	5813060
200	8	7.146	5813080
250	10	9.055	5813100
315	12	10.315	5813120

## Elongated Stub End



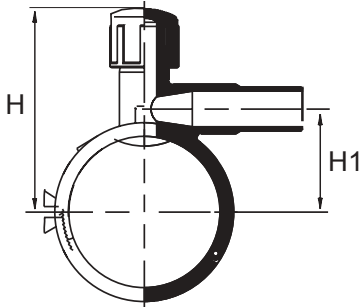
Size (mm)	Size (inch)	OD (inch)	L (inch)	I1 (inch)	I2 (inch)	Part#
160	6	8.346	7.146	0.984	4.980	5832060
200	8	10.551	7.146	1.260	4.626	5832080
250	10	12.598	10.827	1.378	7.953	5832100
315	12	14.567	15.039	1.378	11.890	5832120

## Ductile Iron Backing Ring



Size (mm)	Size (inch)	D (inch)	k (inch)	d2 (inch)	d6 (inch)	b (inch)	# Holes	Part#
63	2	6.378	4.750	0.787	3.071	0.709	4	5048020
90	3	7.638	6.000	0.787	4.370	0.709	8	5048030
110	4	9.016	7.500	0.787	5.236	0.709	8	5048040
160	6	11.142	9.500	0.866	7.008	0.945	8	5048060
200	8	13.583	11.750	0.866	9.291	0.945	8	5048080
250	10	16.220	14.250	0.984	11.339	1.063	12	5048100
315	14	19.173	17.000	0.984	13.307	1.260	12	5048120

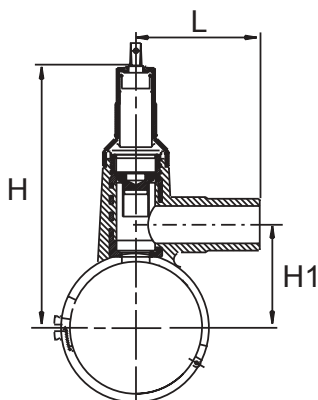
## Reducing Electrofusion Tapping Saddle



Size (mm)	Size (inch)	H (inch)	H1 (inch)	Part#
63/32	2x1	5.039	2.165	5839249
90/32	3x1	5.433	2.559	5839336
90/50	3x1-1/2	6.142	2.559	5839337
90/63	3x2	6.142	2.559	5839338
110/32	4x1	6.024	3.150	5839401
110/50	4x1-1/2	6.732	3.150	5838415
110/63	4x2	6.732	3.150	5839420
160/25	6x3/4	7.717	4.134	5839514
160/32	6x1	7.717	4.134	5839516
160/50	6x1-1/2	7.717	4.134	5839523
160/63	6x2	7.717	4.134	5839530

AirPro Pipe Electrofusion Saddles are rated at 150psi.

## Reducing Electrofusion Tapping Saddle w/ Valve



Size (mm)	Size (inch)	L (inch)	H (inch)	H1 (inch)	Part#
63/32	2x1	4.528	8.150	2.165	5838249
90/32	3x1	4.528	8.543	2.559	5838336
110/63	4x2	5.905	11.811	3.937	5838420
160/63	6x2	5.905	12.795	4.921	5838530
200/63	8x2	5.905	13.583	5.709	5838581

AirPro Pipe Electrofusion Saddles are rated at 150psi.

# Welding Tools

# Air-Pro

## Proweld Hand Socket Welder



The hand held Socket Fusion 2 tool is the smallest welding tool offered by Asahi/America. It is a socket fusion tool capable of welding from 1/2" - 2". It is ideal for pipe sizes from 1/2" to 1 1/4". It features convenient table and floor clamps. Tools require socket heater inserts and beveling tools, which are sold separately.

**Part number: 5687001**  
**Rental PN#: 9687001**

## W3500 Bench Socket Welder



The W3500 is a bench style tool for conducting Socket Fusion. It is capable of fusing from 3/4" to 4". Special angled clamps make pipe and fitting clamping simplified with little change out required when switching sizes. Tools require socket heater inserts and beveling or scrapping tools, which are sold separately.

**Part number: 5711000**  
**Rental PN#: 9711000**

## Socket Fusion Heater Inserts



Size(mm)	Size(inch)	Part#
20	1/2	5797005
25	3/4	5797007
32	1	5797010
40	1-1/4	5797012
50	1-1/2	5797015
63	2	5797020
90	3	5797030
110	4	5797040

## SME-0 Pipe Beveler



The SME-0 tool is ideal for beveling the ends of plastic pipes up to 63mm (2") that will be inserted into socket fusion coupling.

**Part Number 5686001**

## Scrapping Tools



Scrapping Tools are required for electrofusion and 90-110mm (3"-4") socket fusion. Asahi/America offers a wide range of scrapping tools for a variety of sizes & applications. Please consult us for the best recommendation.

**Available for Purchase and Rental**  
**Please consult factory**

## Polymatic Electrofusion Welding Machine



The Polymatic is suitable for all electrofusion fittings up to 48 volts. All parameters are set using a bar code input device. Automated control of all welding parameters insures safe and reliable fusion. The entire tool features a tough thermoplastic housing which resists damage due to moisture.

The Polymatic welds both HDPE and Polypropylene.

**Part number: 5830000**

**Rental PN#: 9830000**

## Tapping Saddle Tools



### Tapping Saddle Locking Clamp

Clamping device for locking electrofusion tapping saddles in place prior to welding. Used in conjunction with saddles on page 8 of this price sheet.

**Part Number 5875000**

**Rental PN# 9875000**



### Tapping Saddle T-Bar Set

Used for saddle penetration of pipe main. Used in conjunction with saddles on page 8 of this price sheet.

**Part Number 5875002**

### Return Merchandise Policy

EFFECTIVE 02/01/00

Asahi/America, Inc., (A/A) will authorize the return of product providing guidelines are adhered to as follows.

---

#### Canceled Orders

A/A. will accept the cancellation of Purchase Orders (PO) with no restocking charges under the following conditions:

- A/A. has not started production of manufactured products.
- A/A. has not placed a purchase order to our vendors for non-stock product or custom product.
- A/A. has not already, picked, packaged and or shipped the product.

Cancellation of orders that do not meet the above conditions may be approved under special consideration and will be subject to a minimum 30% restocking charge, or cancellation charge.

---

#### Authorized Returns

A/A. will authorize the return of product with a minimum 30% restocking charge under the following conditions.

- Product must have been purchased within the last six months.
- Product must be considered stock item by A/A.
- Product must be in resellable condition.

---

#### Product Evaluations

A/A. will authorize the return of product for evaluation upon completion of the RMA form. (See enclosure)

- A/A., upon completion of the evaluation, will repair, replace, or issue a credit for the defective product if it is determined that the cause of failure is the responsibility of A/A. A/A. retains the sole right to determine the correct course of action.
- A/A. will notify the customer if it is determined that the cause of failure is due to normal wear and tear after the expiration of the warranty, misapplication, or improper use. In the event that the failure is not the responsibility of A/A the customer is to determine the corrective action that will be taken. A/A. will not proceed with a repair or replacement until a purchase order is supplied by the customer. The purchase order must cover all expenses incurred by A/A.

---

#### Freight

·Customer is responsible for all freight costs associated with a return that is not directly attributed to an A/A. error or product failure covered under warranty. All returns must be sent prepaid; any collect shipments will be refused and returned to the Customer.

- A/A will be responsible for all standard freight costs for product evaluations where it is determined that the cause of failure is the responsibility of A/A.

## Air Pro High Density Polyethylene

## RETURN POLICY

**Procedures**

A/A will process all RMAs within four (4) weeks of receipt of the product providing the following procedures were followed. Please note; A/A is not responsible for any product that is shipped to our facilities without a completed RMA form. **A/A will not process returns that are not accompanied by an authorized RMA number and product may be returned to the Customer at the customer's expense.**

All correspondences must be made directly to our RMA department.

Telephone Numbers: 1-800-343-3618 ext. 4544

1-781-388-4544

Fax Number 1-781-388-4777

E-mail [RMA@Asahi-America.com](mailto:RMA@Asahi-America.com)

RMA form must be filled out with all relevant information and forwarded to A/A's RMA department. The form must include the following minimum information:

Original PO #, Original Invoice #, Original Order #.

Supply itemized list of proposed return with A/A part numbers.

Specify reason for return.

Upon successful completion of the RMA form and preliminary review, A/A will assign an RMA number and forward to the customer.

A/A. may elect to inspect product on site prior to issuing an RMA number.

Customer must properly package the product, the RMA number must be visible on all packages and indicated on the packing list, and arrange shipment of the product to A/A.

Customer must insure that product is returned in resellable condition in original packaging excluding product that is returned for repair or evaluation.

Customer must insure that all product has been decontaminated and does not present a health or safety problem to anyone that handles it.

A/A. will notify customer of any discrepancies with regards to quantity and/or quality of the returned product.

A/A. will process credit upon completion of a successful inspection of the returned product.

Product returned for evaluation will follow the above guidelines with the following exception.

A resolution to the evaluation must be agreed upon prior to the repair/replacement/credit of the product. The customer will have a two-week period to act upon A/A's resolution to the evaluation. A/A. will return the product to the customer at the customer's expense, if no response is forwarded within this time frame. The customer, prior to the completion of the repair must place a purchase order if it is determined that the failure is proven not to be the responsibility of A/A.

A/A. will provide a full report of product returned for evaluation upon written request.

**Lost/Damaged Shipments**

Damaged shipments and shortages must be signed and acknowledged by the carrier's driver. All claims for lost or damaged shipments must be made directly by the customer to the delivering carrier at time of delivery.

A/A's Customer Service Department must be notified in writing within 10 days of receipt of orders that appear to be short shipped by our shipping department. A/A. will validate this claim through weight calculations and other means available. Customer's requests for proof of delivery by A/A. must be made within 30 days of receipt of invoice. After 30 days, the product will be considered as delivered.

# ASAHI/AMERICA, INC.

35 GREEN STREET, MALDEN, MA 02148-0005

TOLL FREE: (800) 343-3618 · PHONE: (781) 321-5409 · FAX: (781) 321-4421

DIRECT SALES TOLL FREE: EAST (800) 232-7244 / CENTRAL (800) 442-7244 / WEST (800) 282-7244

INTERNET: <http://www.asahi-america.com> · Email: [asahi@asahi-america.com](mailto:asahi@asahi-america.com)

## WARRANTY

Warranty; Limitation on Liability. Asahi/America, Inc., (“Seller”) warrants, to the original Buyer only, that all products delivered hereunder shall be free from defects in design and manufacture for a period of one year from the date of delivery, provided that such products are installed, used, operated, adjusted and serviced only in a proper and appropriate manner and in strict accordance with any instructions relating thereto furnished to Buyer by Seller. In no event shall the foregoing warranty extend to any products in any way caused or allowed to be, or installed, operated or used in such a manner as to be, subject or exposed to conditions of misuse, abuse or accident.

**THE FOREGOING WARRANTY IS EXCLUSIVE AND IN LIEU OF ANY AND ALL OTHER WARRANTIES, EXPRESS OR IMPLIED. NO WARRANTY OF MERCHANTABILITY, NO IMPLIED WARRANTY OF FITNESS FOR ANY PARTICULAR PURPOSE, AND NO IMPLIED WARRANTY ARISING BY USAGE OF TRADE, COURSE OF DEALING OR COURSE OF PERFORMANCE IS GIVEN BY SELLER OR SHALL ARISE BY OR IN CONNECTION WITH THIS SALE AND/OR THE SELLER’S AND/OR BUYER’S CONDUCT IN RELATION THERETO OR TO EACH OTHER, AND IN NO EVENT SHALL SELLER BE LIABLE ON ANY SUCH WARRANTY WITH RESPECT TO ANY PRODUCT.**

Liability of the Seller under or in connection with this sale and/or the foregoing warranty shall be limited, at the sole option of the Seller, to one repair of, replacement of, or a refund of the purchase price of any products or part thereof (a), with respect to which Seller receives, promptly after Buyer’s discovery of any alleged defect and prior to the expiration of the one-year warranty period as provided above, notice from Buyer or Buyer’s claim defect and (b) which shall be returned to Seller by Buyer, as provided herein, promptly after Buyer’s discovery of such alleged defect and which shall be determined by the Seller to have proven defective within the one-year warranty period provided above; failure by Buyer to notify Seller and return such products to Seller after Buyer’s discovery of such alleged defect shall constitute a waiver by Buyer of any and all claims of any kind with respect thereto. Any products returned by Buyer to Seller under the foregoing terms shall be returned to Seller’s place of business freight prepaid, accompanied or preceded by Buyer’s particularized statement of the claimed defect. The risk of loss and freight charges to and from Seller in connection with any returned products shall be borne by Buyer; but Seller shall bear such additional freight charges arising in connection with any such returned products ultimately determined by Seller to be defective under the terms of the foregoing warranty, the cost of repair or replacement (if any) of such products, and the risk of loss or damage which such products are in Seller’s possession at its place of business. The foregoing remedy shall constitute the sole and exclusive remedy of the Buyer under or in connection with this sale and/or warranty of the Seller. Except as specifically provided herein, Seller shall not be responsible or liable for any costs, expenses or damages of Buyer in connection with any removal, repair or replacement (including any attempts or actions relating thereto) of any allegedly defective products, and no charge of setoff of any kind of Buyer relating thereto shall be made against the Seller without prior and specific written approval of Seller.

**IN NO EVENT SHALL SELLER BE RESPONSIBLE OR LIABLE FOR ANY SPECIAL, INDIRECT, INCIDENTAL OR CONSEQUENTIAL DAMAGES ARISING IN ANY WAY IN CONNECTION WITH ANY PRODUCTS OR THIS SALE.**

The agreement of Seller to sell its products is expressly conditioned upon the Buyer’s assent to, and Seller agrees to sell its products only upon, all terms and conditions set forth above and on the face hereof. Buyer’s acceptance of any products provided under this sale shall constitute such assent.