

Electric Actuators

Specifications

- Series 94:** Motor Type – Reversing, 1/4 turn, single phase
 Sizes – A94 for sizes 1-1/2" – 2"
 B94 for sizes 2-1/2" – 4"
 Torque – 150 to 300 in-lbs
 Voltage – 120 Vac, 50/60 Hz
 Amp Draw – For A94: .5 Amps
 For B94: .80 Amps
 Max Ambient Temp – 150° F
 Switches – Two single pole, double throw (15 Amp rating)

Series 94 Electric Actuators

Standard Features (Sizes 1-1/2" – 4")

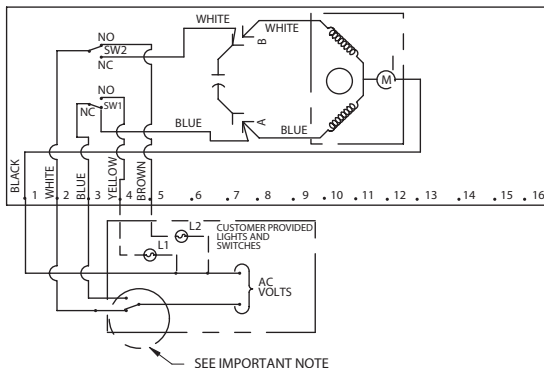
- Brushless, capacitor-run motors (AC models)
- Integral thermal overload protection with auto-reset (AC models)
- Permanently lubricated gear train
- Duty cycle 100% for high cycle applications
- Corrosion-proof/weatherproof NEMA 4X thermoplastic housing with stainless steel trim
- ISO bolt circle
- Two 1/2" NPT conduit ports prevent interference between control and power signals
- Low in cost
- Declutchable manual override
- Standard travel-stop limit switches can simultaneously be used for indicator lights
- Visible position indicator

Options

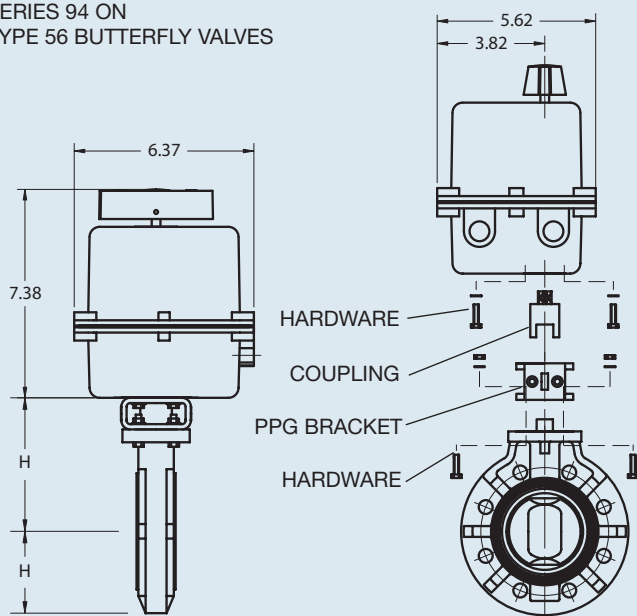
- Failsafe battery pack
- Extra limit switches
- Feedback potentiometer
- Heater and thermostat (to -40° F)
- Positioner: 4–20mA or 0–10 Vdc input signal
- 4–20mA output position transmitter
- Voltages: 220 Vac, 24 Vac, 12 Vac, 24 Vdc, 12 Vdc
- Mechanical brake eliminates seating oscillation

AC Wiring (For 115 Vac and 220 Vac only)

ACTUATOR SHOWN IN COUNTER-CLOCKWISE EXTREME OF TRAVEL, OR "OPEN" POSITION



SERIES 94 ON TYPE 56 BUTTERFLY VALVES



Engineering Data

Duty cycle shown above is for 115 Vac at ambient temperature.

Actuator Model	Torque (in-lbs)	Duty Cycle	Cycle Time (sec)	Weight (lbs)	Amp Draw					
					115 Vac	220 Vac	24 Vac	12 Vac	24 Vdc	12 Vdc
A94	150	100	5	3.5	0.50	0.4	4.0	2.0	4.0	2.0
B94	300	75	5	3.5	0.80	0.6	4.0	2.0	4.0	2.0

NOTE TO WIRING DIAGRAM:

1. EACH ACTUATOR MUST BE POWERED THROUGH ITS OWN INDIVIDUAL SWITCH CONTACTS TO AVOID CROSS FEED.
2. WIRING AS SHOWN IS FOR A94 AND B94 MOTOR.
3. MOTOR HAS A THERMAL PROTECTOR AS SHOWN BY (M) IN DIAGRAM. (115 AND 220 VAC MODEL).
4. IF 115 & 220 VAC MODELS ARE PLC DRIVEN, OUTPUT CONTACTS OF PLC SHOULD BE RATED AT A MINIMUM OF 1.5 TIMES REQUIRED INPUT VOLTAGE OF ACTUATOR.

Dimensions/ Actuator Model

NOMINAL SIZE		MODEL	H	H1
INCHES	mm			
1 1/2	40	A94	5.51	2.95
2	50	A94	5.75	3.27
2 1/2	65	B94	6.18	3.66
3	80	B94	6.46	3.94
4	100	B94	7.16	4.53