



EM Technik Series 2M

Small Diameter Tube Fittings



35 Green Street
Malden, MA 02148

www.asahi-america.com

Phone: 781-321-5409
Fax: 781-321-4421



Explanation of component Availability

Size Range: 0.7 – 1

Available are 0.7, 0.8, 0.9, 1.0 mm tube OD

Size Range: 1.1 –2

Available: 1.1, 1.2, 1.3, 1.4, 1.5, 1.6, 1.7, 1.8, 1.9, 2.0mm tube OD

Size Range: 2.1-4

Available in 2.1, 2.2, 2.3, 2.4, 2.5, 2.6, 2.7, 2.8, 2.9, 3.0, 3.1,3.2, 3.3, 3.4, 3.5, 3.6, 3.7, 3.8, 3.9, 4.0 tube OD

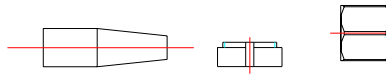
Size Range: 4.1-6.4

Available in 4.1, 4.2, 4.3, 4.4, 4.5, 4.6, 4.7, 4.8, 4.9, 5.0, 5.1, 5.2, 5.3, 5.4, 5.5, 5.6, 5.7, 5.8, 5.9 6.0, 6.1, 6.2, 6.3, 6.4, tube OD

Inch dimensions are also available

2M Sealing Set

Part number: 2M0010.XX

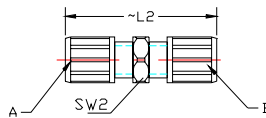


Size Range
0.7-1
1.1-2
2.1-4
4.1-6.4

Item	Materials
Sealing Cone	PTFE
O-ring	FPM
Sealing Washer	PVDF
Knurled nut	PVDF

2M Straight Union

Part number: 2M0100.20



Materials: PVDF, PFA, PTFE

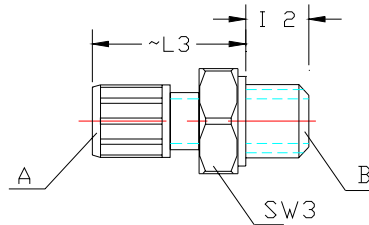
Size Range A	Size Range B	L2 inches (mm)	SW2 inches (mm)
0.7-1	0.7-1	2.16 (55)	0.551 (14)
1.1-2	1.1-2	2.04 (52)	0.551 (14)
2.1-4	2.1-4	1.85 (47)	0.551 (14)
4.1-6.4	4.1-6.4	1.61 (41)	0.551 (14)

Reducers

Size Range A	Size Range B	L2 inches (mm)	SW2 inches (mm)
0.7-1	1.1-2	2.16 (55)	0.551 (14)
	2.1-4	2.16 (55)	0.551 (14)
	4.1-6.4	2.16 (55)	0.551 (14)
1.12	2.1-4	2.04 (52)	0.551 (14)
	4.1-6.4	2.04 (52)	0.551 (14)
2.1-4	4.1-6.4	1.85 (47)	0.551 (14)

2M Connector x Male G Thread

Part number: 2M0100.31

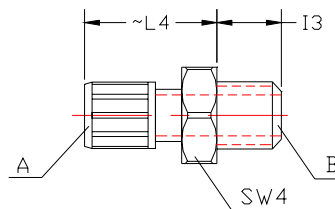


Materials: PVDF, PFA, PTFE

Size Range A	Size Range B	L3 inches (mm)	I2 inches (mm)	SW3 inches (mm)
0.7-1	1/8"	0.984 (25)	0.31 (8)	0.551 (14)
0.7-1	1/4"	1.02 (26)	0.47 (12)	0.67 (17)
1.1-2	1/8"	0.984 (25)	0.31 (8)	0.551 (14)
1.2-2	1/4"	1.02 (26)	0.47 (12)	0.67 (17)
2.1-4	1/8"	0.984 (25)	0.31 (8)	0.551 (14)
2.1-4	1/4"	1.02 (26)	0.47 (12)	0.67 (17)
4.1-6.4	1/8"	0.984 (25)	0.31 (8)	0.551 (14)
4/1-6/4	1/4"	1.02 (26)	0.47 (12)	0.67 (17)

2M Connector x Male NPT

Part number: 2M0100.32



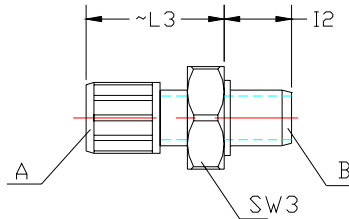
Materials: PVDF, PFA, PTFE

Size Range A	Size Range B	L4 inches (mm)	I3 inches (mm)	SW3 inches (mm)
0.7-1	1/8"	(0.905) (23)	0.394 (10)	0.551 (14)
0.7-1	1/4"	0.945 (24)	0.590 (15)	0.67 (17)
1.1-2	1/8"	(0.905) (23)	0.394 (10)	0.551 (14)
1.2-2	1/4"	0.945 (24)	0.590 (15)	0.67 (17)
2.1-4	1/8"	(0.905) (23)	0.394 (10)	0.551 (14)
2.1-4	1/4"	0.945 (24)	0.590 (15)	0.67 (17)
4.1-6.4	1/8"	(0.905) (23)	0.394 (10)	0.551 (14)
4/1-6/4	1/4"	0.945 (24)	0.590 (15)	0.67 (17)



2M Connector x Male Metric Thread

Part number: 2M0100.33

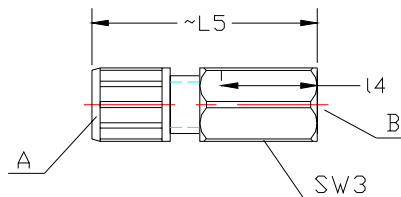


Materials: PVDF, PFA, PTFE

Size Range A	Size Range B	L3 inches (mm)	I2 inches (mm)	SW3 inches (mm)
0.7-1	10x1	0.984 (25)	0.31 (8)	0.551 (14)
1.1-2	10x1	0.984 (25)	0.31 (8)	0.551 (14)
2.1-4	10x1	0.984 (25)	0.31 (8)	0.551 (14)
4.1-6-4	10x1	0.984 (25)	0.31 (8)	0.551 (14)

2M connector x Female G thread

Part number: 2M0100.41



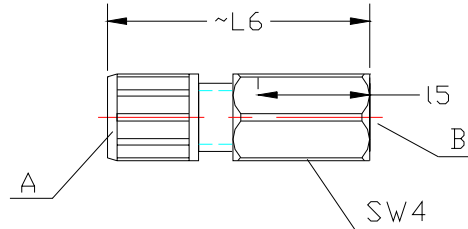
Materials: PVDF, PFA, PTFE

Size Range A	Size Range B	L5 inches (mm)	I4 inches (mm)	SW3 inches (mm)
0.7-1	1/8"	1.41 (36)	0.394 (10)	0.551 (14)
0.7-1	1/4"	1.61 (41)	0.590 (15)	0.670 (17)
1.1-2	1/8"	1.41 (36)	0.394 (10)	0.551 (14)
1.2-2	1/4"	1.61 (41)	0.590 (15)	0.670 (17)
2.1-4	1/8"	1.41 (36)	0.394 (10)	0.551 (14)
2.1-4	1/4"	1.61 (41)	0.590 (15)	0.670 (17)
4.1-6.4	1/8"	1.41 (36)	0.394 (10)	0.551 (14)
4/1-6/4	1/4"	1.61 (41)	0.590 (15)	0.670 (17)



2M connector x Female NPT

Part number: 2M0100.42

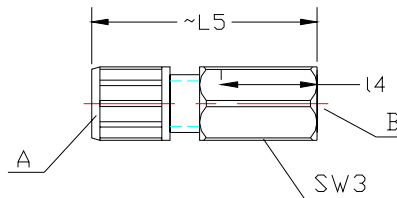


Materials: PVDF, PFA, PTFE

Size Range A	Size Range B	L6 inches (mm)	I5 inches (mm)	SW3 inches (mm)
0.7-1	1/8"	1.42 (36)	0.457 (11.6)	0.551 (14)
0.7-1	1/4"	1.54 (39)	0.646 (16.4)	0.670 (17)
1.1-2	1/8"	1.42 (36)	0.457 (11.6)	0.551 (14)
1.2-2	1/4"	1.54 (39)	0.646 (16.4)	0.670 (17)
2.1-4	1/8"	1.42 (36)	0.457 (11.6)	0.551 (14)
2.1-4	1/4"	1.54 (39)	0.646 (16.4)	0.670 (17)
4.1-6.4	1/8"	1.42 (36)	0.457 (11.6)	0.551 (14)
4/1-6/4	1/4"	1.54 (39)	0.646 (16.4)	0.670 (17)

2M Connector x Female Metric Thread

Part number: 2M0100.43



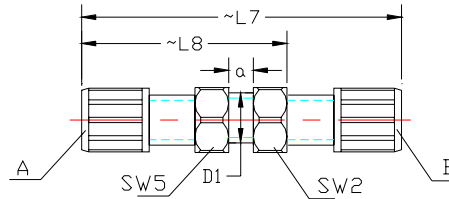
Materials: PVDF, PFA, PTFE

Size Range A	Size Range B	L5 inches (mm)	I4 inches (mm)	SW3 inches (mm)
0.7-1	10x1	1.41 (36)	0.394 (10)	0.551 (14)
1.1-2	10x1	1.41 (36)	0.394 (10)	0.551 (14)
2.1-4	10x1	1.41 (36)	0.394 (10)	0.551 (14)
4.1-6.4	10x1	1.41 (36)	0.394 (10)	0.551 (14)



2M Bulkhead Union

Part Number: 2M0101.20

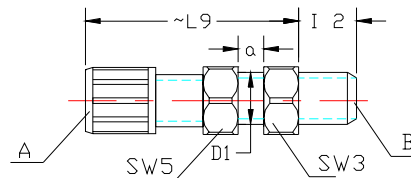


Materials: PVDF, PFA, PTFE

Size Range A	Size Range B	L7 inches (mm)	L8 inches (mm)	a inches (mm)	SW5 inches (mm)	SW2 inches (mm)
0.7-1	0.7-1	2.05 (52)	1.14 (29)	0.354 (9)	0.551 (14)	0.551 (14)
1.1-2	1.1-2	2.05 (52)	1.14 (29)	0.354 (9)	0.551 (14)	0.551 (14)
2.1-4	2.1-4	2.05 (52)	1.14 (29)	0.354 (9)	0.551 (14)	0.551 (14)
4.1-6.4	4.1-6.4	2.05 (52)	1.14 (29)	0.354 (9)	0.551 (14)	0.551 (14)
Reducer						
0.7-1	1.1-2	2.05 (52)	1.14 (29)	0.354 (9)	0.551 (14)	0.551 (14)
	2.1-4	2.05 (52)	1.14 (29)	0.354 (9)	0.551 (14)	0.551 (14)
	4.1-6.4	2.05 (52)	1.14 (29)	0.354 (9)	0.551 (14)	0.551 (14)
1.1-2	2.1-4	2.05 (52)	1.14 (29)	0.354 (9)	0.551 (14)	0.551 (14)
	4.1-6.4	2.05 (52)	1.14 (29)	0.354 (9)	0.551 (14)	0.551 (14)
2.1-4	4.1-6.4	2.05 (52)	1.14 (29)	0.354 (9)	0.551 (14)	0.551 (14)

2M Bulkhead connector x Male G thread

Part number: 2M0101.31



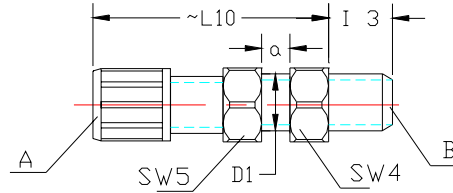
Materials: PVDF, PFA, PTFE

Size Range A	Size Range B	L9 inches (mm)	I2 inches (mm)	a inches (mm)	SW5 inches (mm)	SW3 inches (mm)
0.7-1	1/8"	1.50 (38)	0.315 (8)	0.354 (9)	0.551 (14)	0.551 (14)
	1/4"	1.57 (40)	0.394 (10)	0.354 (9)	0.551 (14)	0.670 (17)
1.1-2	1/8"	1.50 (38)	0.315 (8)	0.354 (9)	0.551 (14)	0.551 (14)
	1/4"	1.57 (40)	0.394 (10)	0.354 (9)	0.551 (14)	0.670 (17)
2.1-4	1/8"	1.50 (38)	0.315 (8)	0.354 (9)	0.551 (14)	0.551 (14)
	1/4"	1.57 (40)	0.394 (10)	0.354 (9)	0.551 (14)	0.670 (17)
4.1-6.4	1/8"	1.50 (38)	0.315 (8)	0.354 (9)	0.551 (14)	0.551 (14)
	1/4"	1.57 (40)	0.394 (10)	0.354 (9)	0.551 (14)	0.670 (17)



2M Bulkhead connector x Male NPT

Part number: 2M0101.32

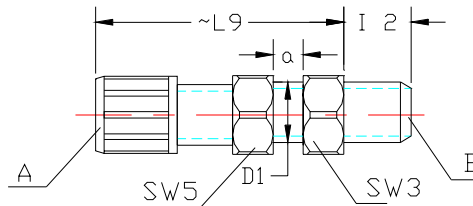


Materials: PVDF, PFA, PTFE

Size Range A	Size Range B	L10 inches (mm)	I3 inches (mm)	a inches (mm)	SW5 inches (mm)	SW4 inches (mm)
0.7-1	1/8"	1.496 (38)	0.394 (10)	0.354 (9)	0.551 (14)	0.472 (12)
	1/4"	1.575 (40)	0.590 (15)	0.354 (9)	0.551 (14)	0.670 (17)
1.1-2	1/8"	1.496 (38)	0.394 (10)	0.354 (9)	0.551 (14)	0.472 (12)
	1/4"	1.575 (40)	0.590 (15)	0.354 (9)	0.551 (14)	0.670 (17)
2.1-4	1/8"	1.496 (38)	0.394 (10)	0.354 (9)	0.551 (14)	0.472 (12)
	1/4"	1.575 (40)	0.590 (15)	0.354 (9)	0.551 (14)	0.670 (17)
4.1-6.4	1/8"	1.496 (38)	0.394 (10)	0.354 (9)	0.551 (14)	0.472 (12)
	1/4"	1.575 (40)	0.590 (15)	0.354 (9)	0.551 (14)	0.670 (17)

2M Bulkhead connector x Male Metric Thread

Part number: 2M0101.33



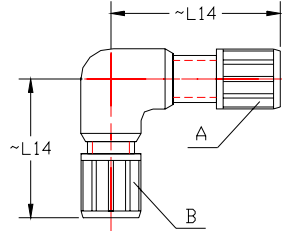
Materials: PVDF, PFA, PTFE

Size Range A	Size Range B	L9 inches (mm)	I2 inches (mm)	a inches (mm)	SW5 inches (mm)	SW3 inches (mm)
0.7-1	10x1	1.50 (38)	0.315 (8)	0.354 (9)	0.551 (14)	0.551 (14)
1.1-2	10x1	1.50 (38)	0.315 (8)	0.354 (9)	0.551 (14)	0.551 (14)
2.1-4	10x1	1.50 (38)	0.315 (8)	0.354 (9)	0.551 (14)	0.551 (14)
4.1-6.4	10x1	1.50 (38)	0.315 (8)	0.354 (9)	0.551 (14)	0.551 (14)



2M Elbow Union

Part Number: 2M0200.20

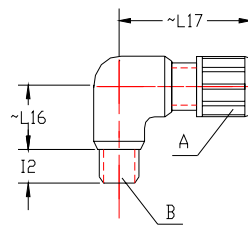


Materials: PVDF, PFA, PTFE

Size Range A	Size Range B	L14 inches (mm)
0.7-1	0.7-1	1.10 (28)
1.1-2	1.1-2	1.10 (28)
2.1-4	2.1-4	1.10 (28)
4.1-6.4	4.1-6.4	1.10 (28)
Reducers		
0.7-1	1.1-2	1.10 (28)
	2.1-4	1.10 (28)
	4.1-6.4	1.10 (28)
1.1-2	2.1-4	1.10 (28)
	4.1-6.4	1.10 (28)
2.1-4	4.1-6.4	1.10 (28)

2M Elbow x Male G thread

Part number: 2M0200.31



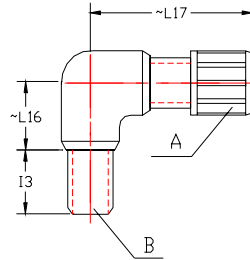
Materials: PVDF, PFA, PTFE

Size Range A	Size Range B	L17 inches (mm)	L16 inches (mm)	I2 inches (mm)
0.7-1	1/8"	1.10 (28)	0.472 (12)	0.315 (8)
	1/4"	1.18 (30)	0.512 (13)	0.472 (12)
1.1-2	1/8"	1.10 (28)	0.472 (12)	0.315 (8)
	1/4"	1.18 (30)	0.512 (13)	0.472 (12)
2.1-4	1/8"	1.10 (28)	0.472 (12)	0.315 (8)
	1/4"	1.18 (30)	0.512 (13)	0.472 (12)
4.1-6.4	1/8"	1.10 (28)	0.472 (12)	0.315 (8)
	1/4"	1.18 (30)	0.512 (13)	0.472 (12)



2M Elbow x Male NPT

Part number: 2M0200.32

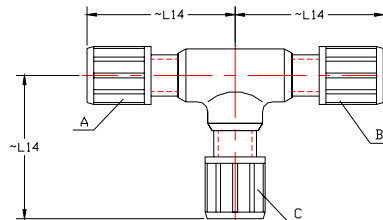


Materials: PVDF, PFA, PTFE

Size Range A	Size Range B	L17 inches (mm)	L16 inches (mm)	I3 inches (mm)
0.7-1	1/8"	1.10 (28)	0.472 (12)	0.393 (10)
	1/4"	1.18 (30)	0.512 (13)	0.591 (15)
1.1-2	1/8"	1.10 (28)	0.472 (12)	0.393 (10)
	1/4"	1.18 (30)	0.512 (13)	0.591 (15)
2.1-4	1/8"	1.10 (28)	0.472 (12)	0.393 (10)
	1/4"	1.18 (30)	0.512 (13)	0.591 (15)
4.1-6.4	1/8"	1.10 (28)	0.472 (12)	0.393 (10)
	1/4"	1.18 (30)	0.512 (13)	0.591 (15)

2M Union Tee

Part number: 2M0300.20



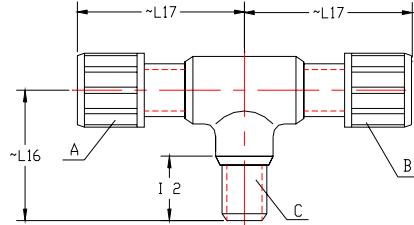
Materials: PVDF, PFA, PTFE

Size Range A	Size Range B	Size C	L14 inches (mm)
0.7-1	0.7-1	0.7-1	1.10 (28)
1.1-2	1.1-2	1.1-2	1.10 (28)
2.1-4	2.1-4	2.1-4	1.10 (28)
4.1-6.4	4.1-6.4	4.1-6.4	1.10 (28)



2M Tee with Male G thread

Part Number: 2M0300.31

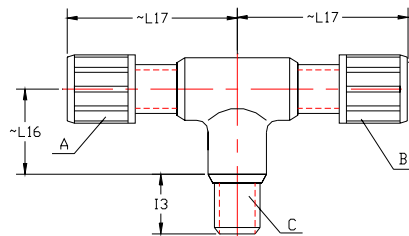


Materials: PVDF, PFA, PTFE

Size Range A	Size Range B	Size C	L17 inches (mm)	L16 inches (mm)	I2 inches (mm)
0.7-1	0.7-1	1/8"	1.10 (28)	0.472 (12)	0.315 (8)
0.7-1	0.7-1	1/4"	1.18 (30)	0.512 (13)	0.472 (12)
1.1-2	1.1-2	1/8"	1.10 (28)	0.472 (12)	0.315 (8)
1.1-2	1.1-2	1/4"	1.18 (30)	0.512 (13)	0.472 (12)
2.1-4	2.1-4	1/8"	1.10 (28)	0.472 (12)	0.315 (8)
2.1-4	2.1-4	1/4"	1.18 (30)	0.512 (13)	0.472 (12)
4.1-6.4	4.1-6.4	1/8"	1.10 (28)	0.472 (12)	0.315 (8)
4.1-6.4	4.1-6.4	1/4"	1.18 (30)	0.512 (13)	0.472 (12)

2M Tee with Male NPT Thread

Part Number: 2M0300.32



Materials: PVDF, PFA, PTFE

Size Range A	Size Range B	Size C	L17 inches (mm)	L16 inches (mm)	I3 inches (mm)
0.7-1	0.7-1	1/8"	1.10 (28)	0.472 (12)	0.394 (10)
0.7-1	0.7-1	1/4"	1.18 (30)	0.512 (13)	0.591 (12)
1.1-2	1.1-2	1/8"	1.10 (28)	0.472 (12)	0.394 (10)
1.1-2	1.1-2	1/4"	1.18 (30)	0.512 (13)	0.591 (12)
2.1-4	2.1-4	1/8"	1.10 (28)	0.472 (12)	0.394 (10)
2.1-4	2.1-4	1/4"	1.18 (30)	0.512 (13)	0.591 (12)
4.1-6.4	4.1-6.4	1/8"	1.10 (28)	0.472 (12)	0.394 (10)
4.1-6.4	4.1-6.4	1/4"	1.18 (30)	0.512 (13)	0.591 (12)



Technical Data

Pressure Rating Factor Chart

Temperature		PFA 15 psi max	PVDF 15 psi max
°C	° F		
20	68	1.00	1.00
30	86	0.90	0.80
40	104	0.85	0.70
50	122	0.80	0.60
60	140	0.70	0.50
70	158	0.60	0.45
80	176	0.50	0.40
90	194	0.45	0.35

Multiply the factor by the maximum pressure rating to determine pressure rating at any temperature

O rings

For Male G thread Connections

Size	EPDM	Viton	Cal Rez
1/8"	✓	✓	✓
1/4"	✓	✓	✓
3/8"	✓	✓	✓
1/2"	✓	✓	✓