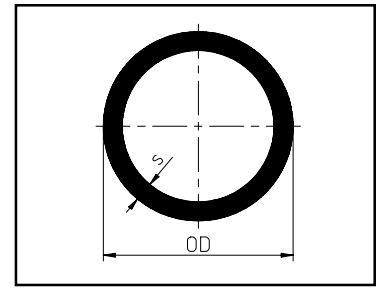


Purad PVDF Pipe

- IR / Butt Fusion
- Extruded



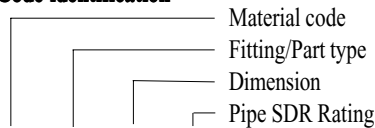
OD		PN 10 / S 16 / SDR 33				PN 16 / S 10 / SDR 21			
[mm]	[inch]	Agur Code	Asahi Part #	s	Weight (lbs)	Agur Code	Asahi Part #	s	Weight (lbs/m)
20	1/2"					705.0020.21	5401005	0.075	0.46
25	3/4"					705.0025.21	5401007	0.075	0.60
32	1"					705.0032.21	5401010	0.094	0.97
40	1 1/4"					705.0040.21	5401012	0.094	1.21
50	1 1/2"					705.0050.21	5401015	0.118	1.87
63	2"	705.0063.33	N/A	0.098	2.05	705.0063.21	5401020	0.118	2.40
75	2 1/2"	705.0075.33	N/A	0.098	2.45	705.0075.21	5401025	0.142	3.42
90	3"	705.0090.33	5401030	0.110	3.26	705.0090.21	5403030	0.169	4.89
110	4"	705.0110.33	5401040	0.134	4.85	705.0110.21	5403040	0.209	7.32
125	4 1/2"	705.0125.33	N/A	0.154	6.26	705.0125.21	N/A	0.236	9.35
140	5"	705.0140.33	N/A	0.169	7.76	705.0140.21	N/A	0.264	11.71
160	6"	705.0160.33	5401060	0.193	10.01	705.0160.21	5403060	0.303	15.34
180	7"	705.0180.33	N/A	0.217	12.65	705.0180.21	N/A	0.339	19.27
200	8"	705.0200.33	5401080	0.244	15.85	705.0200.21	5403080	0.378	23.88
225	9"	705.0225.33	5401090	0.272	19.73	705.0225.21	5403090	0.425	30.14
250	10"	705.0250.33	5401100	0.303	24.45	705.0250.21	5403100	0.469	36.88
280	11"	705.0280.33	5401110	0.339	30.56				
315	12"	705.0315.33	5401120	0.382	38.69				

- Pipe supplied in 5 meter lengths (5 meters equals 16.4 ft).
- Pipe and fitting OD size is metric, inches OD provided as nominal size only.
- PN16 equals 232 psi pressure rating, PN10 equals 150 psi pressure rating.

Components listed in this section contain both Agur Code identifications and Asahi/America part numbers. Either can be used to identify the requested component. When using the Agur Code, be sure to precede the numbers with the Material Identification Code.

Purad HP PVDF Material Code = 31

Code identification



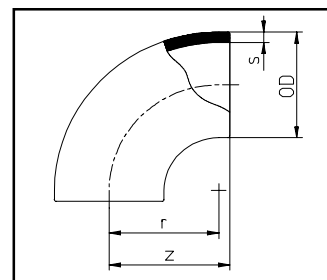
XX . XXX . XXXX . XX

Example:

- Purad PVDF 90, OD 63mm, SDR21 Code 31.001.0063.21

Purad PVDF 90

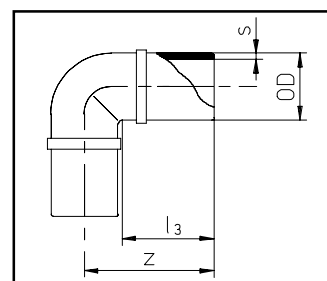
- IR / Butt Fusion
- Molded



OD		Dimensions		PN 10 / S 16 / SDR 33				PN 16 / S 10 / SDR 21			
[mm]	[inch]	r	z	Agru Code	Asahi Part #	s	Weight (lbs)	Agru Code	Asahi Part #	s	Weight (lbs)
20	½"	1.024	1.299					001.0020.21	5407005	0.075	0.02
25	¾"	1.182	1.535					001.0025.21	5407007	0.075	0.04
32	1"	1.340	1.693					001.0032.21	5407010	0.094	0.05
40	1 ¼"	1.576	1.850					001.0040.21	5407012	0.094	0.09
50	1 ½"	1.970	2.323					001.0050.21	5407015	0.118	0.16
63	2"	2.482	2.795					001.0063.21	5407020	0.118	0.26
75	2 ½"	2.876	3.346					001.0075.21	5407025	0.142	0.53
90	3"	3.585	4.055	001.0090.33	5407030	0.110	0.52	001.0090.21	5410030	0.169	0.75
110	4"	4.255	4.843	001.0110.33	5407040	0.134	1.00	001.0110.21	5410040	0.209	1.31
125	4 ½"	4.925	5.315	001.0125.33	N/A	0.154	1.56	001.0125.21	N/A	0.236	2.04
140	5"	5.516	5.827	001.0140.33	N/A	0.169	2.02	001.0140.21	N/A	0.264	2.65
160	6"	6.186	7.126	001.0160.33	5407060	0.193	2.81	001.0160.21	5410060	0.303	5.00
180	7"	6.895	7.874	001.0180.33	N/A	0.217	4.41	001.0180.21	5410070	0.339	5.78
200	8"	7.722	8.543	001.0200.33	5407080	0.244	6.08	001.0200.21	5410080	0.378	7.98
225	9"	8.865	9.843	001.0225.33	5407090	0.272	7.72	001.0225.21	5410090	0.425	10.12
250	10"	9.850	11.299	001.0250.33	5407100	0.303	10.41	001.0250.21	5410100	0.469	13.29
280	11"	11.032	11.339	001.0280.33	5407110	0.339	14.99				
315	12"	11.820	13.307	001.0315.33	5407120	0.382	20.94				

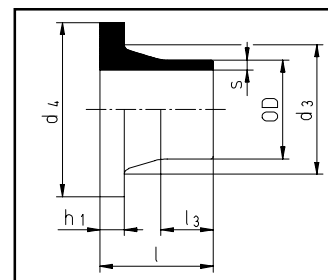
Purad PVDF Extended 90

- IR / Butt Fusion
- Molded



OD		Dimensions		PN 16 / S 10 / SDR 21			
[mm]	[inch]	l3	z	Agru Code	Asahi Part #	s (inch)	Weight (lbs)
20	½"	1.693	2.244	061.0020.21	5408005	0.075	0.04
25	¾"	2.283	3.071	061.0025.21	5408007	0.075	0.07
32	1"	1.496	2.165	061.0032.21	5408010	0.094	0.11
40	1 ¼"	2.283	3.150	061.0040.21	5408012	0.094	0.15
50	1 ½"	2.047	3.150	061.0050.21	5408015	0.118	0.19
63	2"	1.811	3.071	061.0063.21	5408020	0.118	0.38

Purad PVDF ANSI Stub End

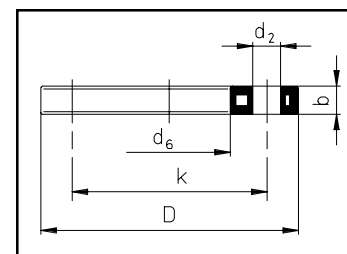


- IR / Butt Fusion
- Molded

OD		Dimensions					PN 10 / S 16 / SDR 33			PN 16 / S 10 / SDR 21		
[mm]	[inch]	d ₃	d ₄	l	h ₁	l ₃	Agru Code	Asahi Part #	Weight (lbs)	Agru Code	Asahi Part #	Weight (lbs)
20	½"	1.063	1.75	1.969	0.236	1.220				012.1020.21	5430005	0.04
25	¾"	1.299	2.13	1.969	0.256	1.181				012.1025.21	5430007	0.09
32	1"	1.575	2.50	1.969	0.276	1.024				012.1032.21	5430010	0.13
40	1½"	1.969	2.81	1.969	0.315	0.866				012.1040.21	5430012	0.22
50	1½"	2.402	3.25	1.969	0.354	0.866				012.1050.21	5430015	0.33
63	2"	2.953	3.95	1.969	0.394	0.709				012.1063.21	5430020	0.44
75	2½"	3.504	4.61	1.969	0.433	0.709				012.1075.21	5430025	0.53
90	3"	4.134	5.21	3.150	0.669	1.299	012.1090.33	5430030	0.84	012.1090.21	5470030	1.17
110	4"	4.921	6.22	3.150	0.709	1.260	012.1110.33	5430040	1.26	012.1110.21	5470040	1.39
160	6"	6.890	8.35	3.150	0.709	1.339	012.1160.33	5430060	2.07	012.1160.21	5470060	2.71
200	8"	9.134	10.55	3.937	0.709* 0.945*	1.654* 1.418*	012.1200.33	5430080	4.28	012.1200.21	5470080	6.28
225	9"	9.252	10.55	3.937	0.709* 0.945*	2.047* 1.812*	012.0225.33	5430090	5.91	012.0225.21	5470090	8.02
250	10"	11.220	12.60	3.937	0.787	1.575	012.1250.33	5430100	6.83	012.1250.21	5470100	11.51
315	12"	13.189	14.57	3.937	0.787	1.575	012.1315.33	5430120	7.65			

* = SDR33 over SDR21 Dimensions

PP ANSI Backing Rings



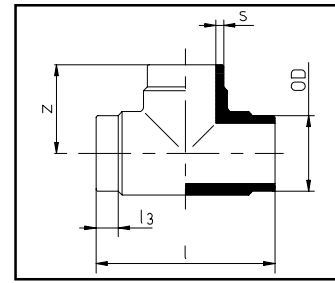
- with Steel Insert
- Molded from Pigmented PP

OD		Dimensions					up to a pressure rate of 16 bar acc. DIN 16962 part5					
[mm]	[inch]	D	k	d ₆	d ₂	b	Bolt Holes	Torque [Nm]	Agru Code	Asahi Part #	Weight (lbs)	
20	½"	3.740	2 3/8"	1.102	5/8"	0.472	4	15	013.0020.11	5046005	0.49	
25	¾"	4.016	2 3/4"	1.339	5/8"	0.472	4	15	013.0025.11	5046007	0.62	
32	1"	4.488	3 1/8"	1.654	5/8"	0.630	4	15	013.0032.11	5046010	0.93	
40	1¼"	5.118	3 1/2"	2.008	5/8"	0.630	4	25	013.0040.11	5046012	1.12	
50	1½"	5.236	3 7/8"	2.441	5/8"	0.709	4	35	013.0050.11	5046015	1.32	
63	2"	6.378	4 3/4"	3.071	3/4"	0.709	4	35	013.0063.11	5046020	1.92	
75	2½"	7.244	5 1/2"	3.622	3/4"	0.709	4	40	013.0075.11	5046025	2.29	
90	3"	7.638	6"	4.370	3/4"	0.709	4	40	013.0090.11	5046030	2.43	
110	4"	9.016	7 1/2"	5.236	3/4"	0.709	8	40	013.0110.11	5046040	3.57	
160	6"	11.142	9 1/2"	7.008	7/8"	0.945	8	60	013.0160.11	5046060	5.47	
200	8"	13.583	11 3/4"	9.291	7/8"	0.945	8	70	013.0200.11	5046080	7.80	
225	9"	16.220	14 1/4"	11.339	1"	1.063	12	100	013.0250.11	5046100	14.18	
250	10"	19.173	17"	13.307	1"	1.260	12	110	013.0315.11	5046120	27.87	

225mm (9") AND 200mm (8") Stub Ends use 8" ANSI Backing Ring

Purad PVDF Standard Tee

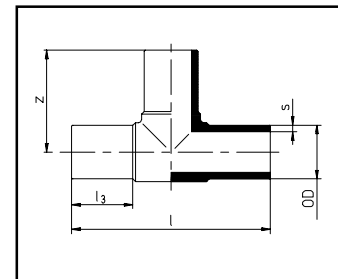
- IR / Butt Fusion
- Molded



OD		Dimensions			PN 10 / S 16 / SDR 33				PN 16 / S 10 / SDR 21			
[mm]	[inch]	l	z	l3	Agru Code	Asahi Part #	s	Weight (lbs)	Agru Code	Asahi Part #	s	Weight (lbs)
20	½"	2.756	1.378	0.591					006.0020.21	5418005	0.075	0.09
25	¾"	3.150	1.575	0.591					006.0025.21	5418007	0.075	0.11
32	1"	3.504	1.772	0.669					006.0032.21	5418010	0.094	0.18
40	1 ¼"	3.937	1.969	0.630					006.0040.21	5418012	0.094	0.22
50	1 ½"	4.724	2.362	0.906					006.0050.21	5418015	0.118	0.46
63	2"	5.866	2.953	1.102					006.0063.21	5418020	0.118	0.68
75	2 ½"	6.850	3.425	1.102					006.0075.21	5418025	0.142	0.93
90	3"	7.126	3.622	1.299	006.0090.33	5418030	0.110	0.88	006.0090.21	5421030	0.169	1.23
110	4"	8.504	4.331	1.299	006.0110.33	5418040	0.134	1.85	006.0110.21	5421040	0.209	2.40
125	4 ½"	10.984	5.472	2.047	006.0125.33	N/A	0.154	1.98	006.0125.21	N/A	0.236	2.65
140	5"	12.126	6.063	2.362	006.0140.33	N/A	0.169	3.97	006.0140.21	N/A	0.264	5.20
160	6"	10.984	5.512	1.772	006.0160.33	5418060	0.193	4.19	006.0160.21	5421060	0.303	5.51
180	7"	15.748	7.874	3.150	006.0180.33	N/A	0.217	5.51	006.0180.21	N/A	0.339	7.28
200	8"	17.559	8.780	3.504	006.0200.33	5418080	0.244	7.28	006.0200.21	5421080	0.378	9.48
225	9"	19.606	9.803	3.898	006.0225.33	5418090	0.272	9.26	006.0225.21	5421090	0.425	12.13
250	10"	17.598	8.543	2.205	006.0250.33	5418100	0.303	16.76				
280	11"	19.488	9.921	2.756	006.0280.33	5418110	0.339	25.07				
315	12"	21.850	10.827	3.150	006.0315.33	5418120	0.382	37.48				

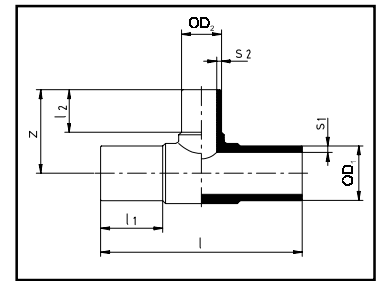
Purad PVDF Extended Tee

- IR / Butt Fusion
- Molded



OD		Dimensions			PN 16 / S 10 / SDR 21			
[mm]	[inch]	l	z	l3	Agru Code	Asahi Part #	s	Weight (lbs)
20	½"	4.291	2.165	1.417	066.0020.21	5419005	0.075	0.09
25	¾"	4.606	2.323	1.575	066.0025.21	5419007	0.075	0.11
32	1"	5.630	2.835	1.772	066.0032.21	5419010	0.094	0.18

Purad PVDF Reducing Tee



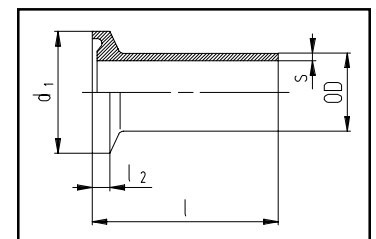
- IR / Butt Fusion
- Molded

OD		Dimensions				PN 10 / S 16 / SDR 33			
[mm]	[inch]	l	li	l2	z	Agru Code	Asahi Part #	s	Weight (lbs)
110/90	4"/3"	12.332	3.428	2.955	5.910	065.1190.33	5431530	0.134/0.110	2.16
160/90	6"/3"	13.711	3.822	2.758	7.210	065.1690.33	5431531	0.193/0.110	4.37
160/110	6"/4"	13.672	3.782	3.152	7.289	065.1611.33	5431532	0.193/0.134	4.50

OD		Dimensions				PN 16 / S 10/ SDR 21			
[mm]	[inch]	l	li	l2	z	Agru Code	Asahi Part #	s	Weight (lbs)
63/32	2"/1"	5.871	1.103	1.064	2.916	065.6332.21	5422249	0.118/0.094	0.49
90/63	3"/2"	10.362	2.955	2.561	5.083	065.9063.21	5422338	0.169/0.118	1.85
110/63	4"/2"	12.411	3.349	2.561	5.910	065.1163.21	5422420	0.209/0.118	2.78
110/90	4"/3"	12.332	3.428	2.955	5.910	065.1190.21	5422422	0.209/0.169	2.98
160/63	6"/2"	13.593	3.940	2.561	6.895	065.1663.21	5422530	0.303/0.118	6.02
160/90	6"/3"	13.711	3.822	2.758	7.210	065.1690.21	5422531	0.303/0.169	6.28
160/110	6"/4"	13.672	3.782	3.152	7.289	065.1611.21	5422532	0.303/0.209	6.50

OD		Dimensions				PN 10 x PN 16 / S 16 / SDR 33 x SDR 21			
[mm]	[inch]	l	li	l2	z	Agru Code	Asahi Part #	s	Weight (lbs)
90/63	3"/2"	10.362	2.955	2.561	5.083	065.9063.31	5420338	0.110/0.118	1.23
110/63	4"/2"	12.411	3.349	2.561	5.910	065.1163.31	5420420	0.134/0.118	2.03
110/90	4"/3"	12.332	3.428	2.955	5.910	065.1190.31	N/A	0.134/0.169	2.31
160/63	6"/2"	13.593	3.940	2.561	6.895	065.1663.31	5420530	0.193/0.118	4.23
160/90	6"/3"	13.711	3.822	2.758	7.210	065.1690.31	5420531	0.193/0.169	4.52
160/110	6"/4"	13.672	3.782	3.152	7.289	065.1611.31	5420532	0.193/0.209	4.72

Purad PVDF Sanitary Adapter



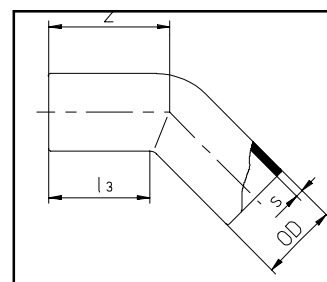
- IR / Butt Fusion
- Machined, Sanitary Adapter

OD		Dimensions			PN 10 / ISO S-5 / SDR 11	
Butt [mm]	Clamp* [inch]	l2	l	d1	Asahi Part #	s
20	1/2"	0.142	1.500	0.984	6360005	0.098
25	1"	0.110	1.500	1.984	6360007	0.106
32	1 1/2"	0.110	1.500	1.984	6360010	0.114
40	1 1/2"	0.110	1.500	1.984	6360012	0.146
50	2"	0.110	1.500	2.490	6360015	0.181
63	2 1/2"	0.110	1.500	2.990	6360030	0.228

*Designed to mate to TriClamp Dimensions. Gasket and Clamp not Included.

Purad PVDF 45

- IR / Butt Fusion
- Molded

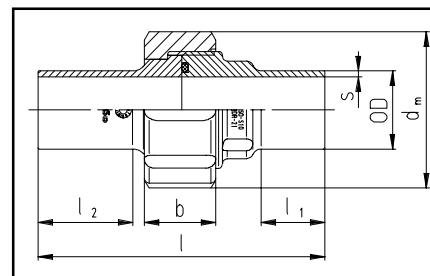


OD		Dimensions		PN 10 / S 16 / SDR 33				PN 16 / S 10 / SDR 21			
[mm]	[inch]	b	z	Agru Code	Asahi Part #	s	Weight (lbs)	Agru Code	Asahi Part #	s	Weight (lbs)
20	½"	1.535	1.693					060.0020.21	5414005	0.075	0.04
25	¾"	1.575	1.772					060.0025.21	5414007	0.075	0.07
32	1"	1.811	2.047					060.0032.21	5414010	0.094	0.11
40	1 ¼"	1.969	2.283					060.0040.21	5414012	0.094	0.15
50	1 ½"	2.205	2.598					060.0050.21	5414015	0.118	0.19
63	2"	2.441	2.953					060.0063.21	5414020	0.118	0.38
90	3"	1.417	2.323	060.0090.33	5414030	0.110	0.92	060.0090.21	5416030	0.169	1.37
110	4"	1.772	2.677	060.0110.33	5414040	0.134	1.48	060.0110.21	5416040	0.209	2.09
140	5"	3.937	3.346	060.0140.33	N/A	0.169	3.24	060.0140.21	N/A	0.264	4.23
160	6"	2.559	4.055	060.0160.33	5414060	0.193	3.72	060.0160.21	5416060	0.303	5.57

- Other Sizes Available as Fabricated Items, Consult Factory for Details.

Purad PVDF Type G Union

- IR / Butt Fusion
- Molded

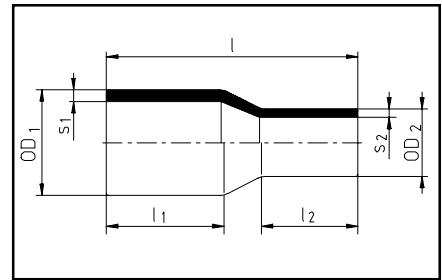


OD		Dimensions						PN 16 / ISO S-10 / SDR 21		
[mm]	[inch]	s	l	li	lz	dm	b	Agru Code	Asahi Part #	Weight (lbs)
20	½"	0.075	4.213	0.984	1.398	1.850	0.945	024.0020.21	5434005	0.21
25	¾"	0.075	4.409	0.965	1.437	2.244	1.024	024.0025.21	5434007	0.27
32	1"	0.094	4.685	1.043	1.547	2.520	1.181	024.0032.21	5434010	0.32
40	1 ¼"	0.094	4.921	0.984	1.476	3.071	1.220	024.0040.21	5434012	0.43
50	1 ½"	0.118	5.118	0.984	1.575	3.504	1.378	024.0050.21	5434015	0.66
63	2"	0.118	5.354	0.984	1.594	4.291	1.535	024.0063.21	5424020	0.89

- Type G Unions supplied standard with FPM O'Rings, Consult Factory for other Elastomer Materials.

Purad PVDF Extended Leg Concentric Reducer

- IR / Butt Fusion
- Molded, Extended Leg Fitting

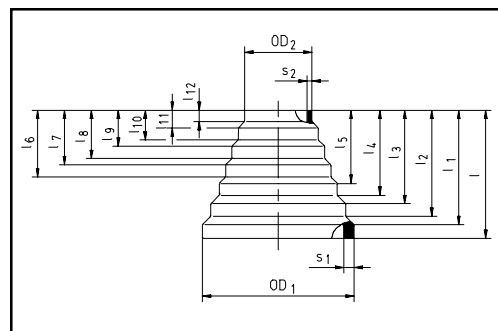


OD		Dimensions			PN 10 / S 16 / SDR 33				PN 16 / S 10 / SDR 21			
[mm]	[inch]	l1	l2	l	Agru Code	Asahi Part #	s (inch)	Weight (lbs)	Agru Code	Asahi Part #	s (inch)	Weight (lbs)
25 / 20	¾" / ½"	0.787	0.787	1.969					067.2520.21	5424101	0.075/0.075	0.04
32 / 20	1" / ½"	0.728	0.748	1.969					067.3220.21	5424130	0.095/0.075	0.07
32 / 25	1" / ¾"	0.787	0.787	1.969					067.3225.21	5424131	0.095/0.075	0.07
40 / 20	1¼" / ½"	0.787	0.787	2.165					067.4020.21	N/A	0.095/0.075	0.12
40 / 25	1¼" / ¾"	0.787	0.787	2.165					067.4025.21	N/A	0.095/0.075	0.13
40 / 32	1¼" / 1"	0.787	0.787	2.165					067.4032.21	5424168	0.095/0.095	0.14
50 / 20	1½" / ½"	0.906	0.787	2.362					067.5020.21	N/A	0.118/0.075	0.17
50 / 25	1½" / ¾"	0.945	0.787	2.362					067.5025.21	5424210	0.118/0.075	0.17
50 / 32	1½" / 1"	0.984	0.787	2.362					067.5032.21	5424211	0.118/0.095	0.18
50 / 40	1½" / 1¼"	0.984	0.866	2.362					067.5040.21	5424212	0.118/0.095	0.19
63 / 32	2" / 1"	0.984	0.709	2.559					067.6332.21	5424249	0.118/0.095	0.29
63 / 40	2" / 1¼"	1.024	0.866	2.559					067.6340.21	5424250	0.118/0.095	0.30
63 / 50	2" / 1½"	0.984	0.945	2.559					067.6350.21	5424251	0.118/0.118	0.31
75 / 50	2½" / 1½"	2.480	2.244	5.827					067.7550.21	5424291	0.142/0.118	0.46
75 / 63	2½" / 2"	2.559	2.362	5.866					067.7563.21	5424292	0.142/0.118	0.49
90 / 63	3" / 2"	2.756	2.323	6.299					067.9063.21	5424338	0.169/0.118	0.62
90 / 75	3" / 2½"	2.953	2.441	6.378					067.9075.21	5424339	0.169/0.142	0.66
110 / 63	4" / 2"	3.268	2.244	7.087					067.1163.21	5424420	0.209/0.118	1.39
110 / 90	4" / 3"	3.110	2.835	7.087	067.1190.33	5497422	0.134/0.110	1.21	067.1190.21	5424422	0.209/0.169	1.43
140/110	5" / 4"	1.654	1.575	4.331	067.1411.33	N/A	0.169/0.134	3.40	067.1411.21	N/A	0.264/0.209	3.42
160/110	6" / 4"	3.740	3.504	8.740	067.1611.33	5497532	0.193/0.134	3.40	067.1611.21	5424532	0.303/0.209	2.87
160/140	6" / 5"	3.740	3.780	8.898	067.1614.33	N/A	0.193/0.169	3.53	067.1614.21	N/A	0.303/0.264	3.53
225/160	9" / 6"	1.260	1.378	6.299	067.2216.33	5497606	0.272/0.193	2.54	067.2216.21	N/A	0.426/0.303	7.05
250/160	10" / 6"	1.417	1.417	7.047	067.2516.33	5497627	0.303/0.193	5.07	067.2516.21	N/A	0.469/0.303	7.50
250/225	10" / 9"	1.693	1.102	7.087	067.2522.33	5497629	0.303/0.272	o.r.	067.2522.21	N/A	0.469/0.426	o. r.
315/160	12" / 6"	1.654	1.457	7.087	067.3116.33	5497659	0.382/0.193	o.r.	067.3116.21	N/A	0.591/0.303	
315/250	12" / 10"	1.654	1.457	7.087	067.3125.33	5497630	0.382/0.303	11.02	067.3125.21	N/A	0.591/0.469	

OD		Dimensions			PN 10 x PN 16 / S 16 / SDR 33 x SDR 21			
[mm]	[inch]	l1	l2	l	Agru Code	Asahi Part #	s (inch)	Weight (lbs)
90 / 63	3" / 2"	2.756	2.323	6.299	067.9063.31	5494338	0.110/0.118	1.23
110 / 63	4" / 2"	3.268	2.244	7.087	067.1163.31	5494420	0.134/0.118	1.23
160/110	6" / 4"	3.740	3.504	8.740	067.1611.31	5494532	0.193/0.209	3.40

Purad PVDF Concentric Reducer

- IR / Butt Fusion
- Molded

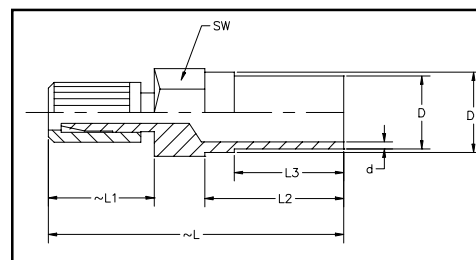


OD		Dimensions												
OD1/OD2		l1	l11	l2	l3	l4	l5	l6	l7	l8	l9	l10	l11	l12
63/16	2" / 3/8"	2.205	1.850	1.398	1.260	1.043	0.965	0.748	0.650	0.512	0.433	0.355	0.296	0.197
110/63	4" / 2"	2.559	2.106	1.693	1.280	0.984	0.591	0.339						
160/110	6" / 4"	3.346	2.815	2.343	1.791	1.516	0.925	0.610						
225/160	9" / 6"	3.819	3.031	2.480	1.870	1.535	0.945	0.531						
315/225	12" / 9"	5.394	4.350	3.602	2.835	2.185	1.398	0.846						

OD		PN 10 / S 16 / SDR 33			PN 16 / S 10 / SDR 21		
63/16	2" / 3/8"				007.6316.21	5437247	0.09
110/63	4" / 2"				007.1163.21	5437420	0.42
160/110	6" / 4"	007.1611.33	5437532	0.38			
225/160	9" / 6"	007.2216.33	5437585	0.78	007.2216.21	N/A	2.25
315/225	12" / 9"	007.3122.33	5437670	1.97			

Purad PVDF Flare Adapter

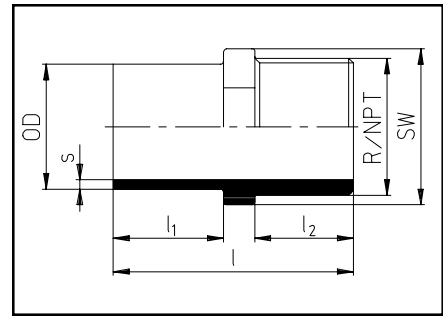
- IR / Butt Fusion
- Molded, Flare by Butt Transition



OD		Dimensions					PN 16 / ISO S-10 / SDR 21	
D [mm]	Flare [inch]	l1	l2	l3	l	SW	Asahi Part #	d
20	1/4"	1.142	1.500	1.181	3.190	0.945	5406096	0.075
20	3/8"	1.260	1.500	1.181	3.310	0.945	5406098	0.075
20	1/2"	1.260	1.500	1.181	3.400	1.063	5406005	0.075
25	3/8"	1.260	1.500	1.181	3.360	1.181	5406106	0.075
25	1/2"	1.300	1.500	1.181	3.400	1.181	5406101	0.075
25	3/4"	1.456	1.500	1.181	3.560	1.181	5406007	0.075
32	3/8"	1.260	1.500	1.181	3.390	1.614	5406105	0.094
32	1/2"	1.260	1.500	1.181	3.430	1.614	5406130	0.094
32	3/4"	1.456	1.500	1.181	3.590	1.614	5406131	0.094
32	1"	1.732	1.500	1.181	3.860	1.614	5406010	0.094

Purad PVDF Male Adapter

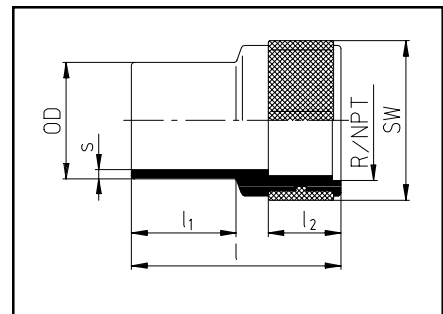
- IR / Butt Fusion
- Molded, NPT Adapter



OD		Dimensions						PN 16 / ISO S-10 / SDR 21		
[mm]	[inch]	s	l	l ₁	l ₂	SW	NPT Thd	Agri Code	Asahi Part #	Weight (lbs)
20	½"	0.075	1.811	0.787	0.709	0.866	½"	033.2021.21	5447005	0.04
25	¾"	0.075	2.008	0.906	0.787	1.063	¾"	033.2526.21	5447007	0.05
32	1"	0.094	2.402	1.142	0.906	1.417	1"	033.3233.21	5447010	0.11
40	1¼"	0.094	2.598	1.142	1.063	1.791	1¼"	033.4041.21	5447012	0.16
50	1½"	0.118	2.913	1.299	1.142	2.126	1½"	033.5051.21	5447015	0.26
63	2"	0.118	3.150	0.984	1.220	2.520	2"	033.6364.21	5447020	0.39

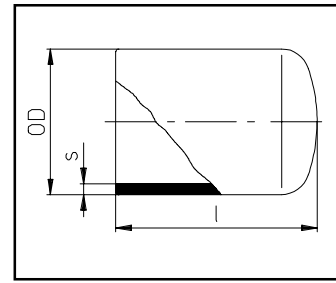
Purad PVDF Female Adapter

- IR / Butt Fusion
- Molded, NPT Adapter



OD		Dimensions						PN 16 / ISO S-10 / SDR 21		
[mm]	[inch]	s	l	l ₁	l ₂	SW	NPT Thd	Agri Code	Asahi Part #	Weight (lbs)
20	½"	0.075	1.811	0.787	0.630	1.260	1/2"	032.2021.21	5449005	0.03
25	¾"	0.075	2.008	0.906	0.709	1.614	3/4"	032.2526.21	5449007	0.05
32	1"	0.094	2.283	1.142	0.787	1.811	1"	032.3233.21	5449010	0.08
40	1¼"	0.094	2.441	1.181	0.945	2.165	1 1/4"	032.4041.21	5449012	0.13
50	1½"	0.118	2.677	1.299	1.024	2.756	1 1/2"	032.5051.21	5449015	0.21
63	2"	0.118	2.953	1.378	1.181	3.346	2"	032.6364.21	5449020	0.33

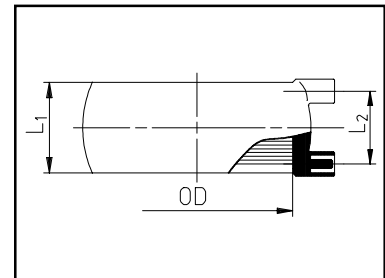
Purad PVDF Cap



- IR / Butt Fusion
- Molded

OD		Dimensions	PN 10 / S 16 / SDR 33				PN 16 / S 10 / SDR 21			
[mm]	[inch]	l	Agru Code	Asahi Part #	s (inch)	Weight (lbs)	Agru Code	Asahi Part #	s (inch)	Weight (lbs)
20	1/2"	1.772					064.0020.21	5443007	0.075	0.02
25	3/4"	1.929					064.0025.21	5443007	0.075	0.03
32	1"	2.205					064.0032.21	5443010	0.094	0.06
40	1 1/4"	2.520					064.0040.21	5443012	0.094	0.08
50	1 1/2"	2.874					064.0050.21	5443015	0.118	0.13
63	2"	3.386					064.0063.21	5443020	0.118	0.24
75	2 1/2"	3.661					064.0075.21	N/A	0.142	0.40
90	3"	4.331	064.0090.33	5443030	0.110	0.40	064.0090.21	N/A	0.169	0.66
110	4"	4.921	064.0110.33	5443040	0.134	0.64	064.0110.21	N/A	0.209	1.13

Purad PVDF HPF Coupling

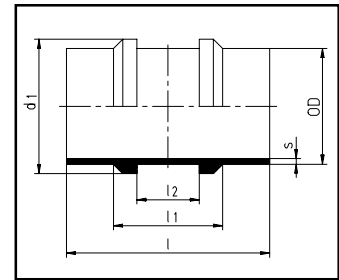


- IR / Butt Fusion
- Molded Electrofusion Coupling

OD		Dimensions		PN 16		
[mm]	[inch]	l1	l2	Agru Code	Asahi Part #	Weight (lbs)
20	1/2"	0.787	0.591	073.0020.21	5479005	0.03
25	3/4"	0.787	0.591	073.0025.21	5479007	0.03
32	1"	0.787	0.591	073.0032.21	5479010	0.05
40	1 1/4"	0.984	0.787	073.0040.21	5479012	0.08
50	1 1/2"	1.181	0.945	073.0050.21	5479015	0.11
63	2"	1.181	0.945	073.0063.21	5479020	0.13

Designed Exclusively for use with fittings of Solef 1009 resin. Can not be used with other systems.

Purad PVDF Restraint Fitting

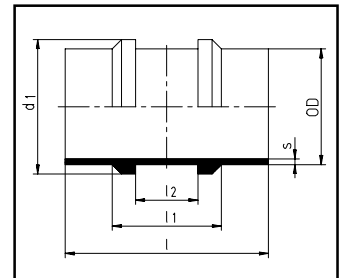


- IR / Butt Fusion
- Molded

OD		Dimensions				PN 10 / S 16 / SDR 33			
[mm]	[inch]	d1	l	l1	l2	Agru Code	Asahi Part #	s (inch)	Weight (lbs)
90	3"	4.134	5.866	2.756	1.575	028.0090.33	5471030	0.110	0.71
110	4"	5.000	5.906	2.756	1.575	028.0110.33	5471040	0.134	1.04
125	4 ½"	5.630	6.299	3.937	2.362	028.0125.33	N/A	0.154	1.37
140	5"	6.181	6.220	3.937	2.362	028.0140.33	N/A	0.169	1.70
160	6"	7.008	6.220	3.937	2.362	028.0160.33	5471040	0.193	2.14

OD		Dimensions				PN 16 / S 10 / SDR 21			
[mm]	[inch]	d1	l	l1	l2	Agru Code	Asahi Part #	s (inch)	Weight (lbs)
32	1"	2.126	4.724	2.087	1.280	028.0032.21	5461010	0.094	0.15
63	2"	3.307	4.724	1.969	1.280	028.0063.21	5461020	0.118	0.37
90	3"	4.134	5.866	2.756	1.575	028.0090.21	5461030	0.169	0.93
110	4"	5.000	5.906	2.756	1.575	028.0110.21	5461040	0.209	1.39
125	4 ½"	5.630	6.299	3.937	2.362	028.0125.21	N/A	0.236	1.85
140	5"	6.181	6.220	3.937	2.362	028.0140.21	N/A	0.264	2.31
160	6"	7.008	6.220	3.937	2.362	028.0160.21	5461060	0.303	2.95

Purad PVDF Restraint Fitting

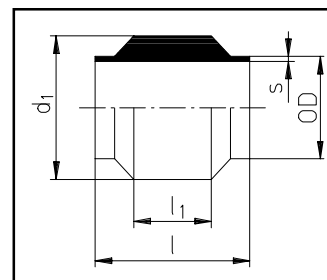


- IR / Butt Fusion
- Machined

OD		Dimensions				PN 16 / S 10 / SDR 21			
[mm]	[inch]	d1	l	l1	l2	Agru Code	Asahi Part #	s (inch)	Weight (lbs)
20	1/2"	1.100	3.700	2.090	1.280	N/A	5461005	0.075	C.F.
25	3/4"	1.300	3.700	2.090	1.280	N/A	5461007	0.075	C.F.
40	1 ¼"	1.890	3.700	2.090	1.280	N/A	5461012	0.094	C.F.
50	1 ½"	2.280	4.500	2.090	1.280	N/A	5461015	0.118	C.F.
75	2 ½"	3.430	5.110	2.760	1.575	N/A	5461025	0.142	C.F.

Purad PVDF Inst. Fitting

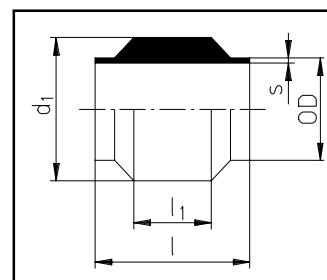
- IR / Butt Fusion
- Molded Instrumentation Fitting



OD		Dimensions			PN 10 / S 16 / SDR 33				PN 16 / S 10 / SDR 21			
[mm]	[inch]	d1	l	l1	Agru Code	Asahi Part #	s (inch)	Weight (lbs)	Agru Code	Asahi Part #	s (inch)	Weight (lbs)
32	1"	2.364	4.724	2.047					030.1032.21	5499010	0.094	0.44
63	2"	2.758	4.724	2.047					030.1063.21	5499020	0.118	0.84
90	3"	4.137	5.866	2.362	030.1090.33	5499030	0.110	1.21	030.1090.21	5492030	0.169	1.43
110	4"	4.886	5.906	2.362	030.1110.33	5499040	0.134	1.52	030.1110.21	5492040	0.209	1.87
125	4½"	5.634	6.299	3.150	030.1125.33	N/A	0.154	2.25	030.1125.21	N/A	0.236	2.73
140	5"	6.186	6.220	3.071	030.1140.33	N/A	0.169	2.82	030.1140.21	N/A	0.264	3.44
160	6"	7.013	6.220	3.071	030.1160.33	5499060	0.193	3.40	030.1160.21	5492060	0.303	4.21

Purad PVDF Inst. Fitting

- IR / Butt Fusion
- Machined Instrumentation Fitting

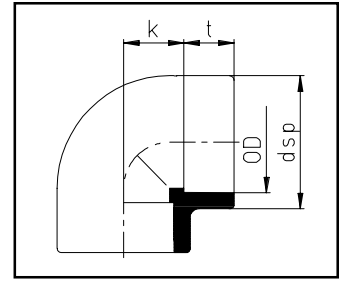


OD		Dimensions			PN 16 / S 10 / SDR 21			
[mm]	[inch]	d1	l	l1	Agru Code	Asahi Part #	s (inch)	Weight (lbs)
40	1¼"	2.750	4.720	2.050	N/A	5499012	0.094	C.F.
50	1½"	3.150	4.720	2.050	N/A	5499015	0.118	C.F.
75	2½"	4.130	4.720	2.050	N/A	5499025	0.142	C.F.

- All Instrumentation Fittings are available with single or multiple threaded taps.
 -Taps (1/4" -3/4") are designed to be accomodate sampling valves and probes.

Purad PVDF Socket 90

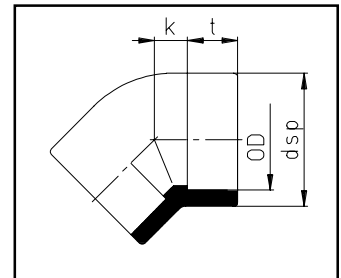
- Socket Fusion
- Molded



OD		Dimensions			PN 16		
[mm]	[inch]	dsp	k	t	Agru Code	Asahi Part #	Weight (lbs)
20	½"	1.14	0.59	0.63	30.051.0020.07	5991005	0.08
25	¾"	1.38	0.59	0.71	30.051.0025.07	5991007	0.11
32	1"	1.69	0.83	0.77	30.051.0032.07	5991010	0.17
40	1¼"	2.05	0.98	0.85	30.051.0040.07	5991012	0.30
50	1½"	2.52	1.18	0.96	30.051.0050.07	5991015	0.50
63	2"	3.19	1.38	1.10	30.051.0063.07	5991020	0.92
75	2½"	3.62	1.54	1.28	30.051.0075.07	5991025	1.24
90	3"	4.45	1.73	1.40	30.051.0090.07	5991030	2.39
110	4"	5.24	2.09	1.63	30.051.0110.07	5991040	3.37

Purad PVDF Socket 45

- Socket Fusion
- Molded

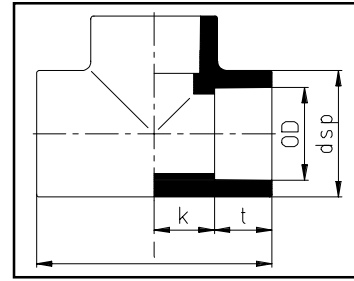


OD		Dimensions			PN 16		
[mm]	[inch]	dsp	k	t	Agru Code	Asahi Part #	Weight (lbs)
20	½"	1.14	0.20	0.63	30.050.0020.07	5988005	0.07
25	¾"	1.38	0.24	0.71	30.050.0025.07	5988007	0.09
32	1"	1.69	0.28	0.75	30.050.0032.07	5988010	0.16
40	1¼"	2.05	0.35	0.85	30.050.0040.07	5988012	0.24
50	1½"	2.52	0.43	0.94	30.050.0050.07	5988015	0.39
63	2"	3.19	0.63	1.06	30.050.0063.07	5988020	0.68
75	2½"	3.62	0.63	1.26	30.050.0075.07	5988025	0.91
90	3"	4.45	0.75	1.44	30.050.0090.07	5988030	1.72
110	4"	5.24	1.06	1.63	30.050.0110.07	5988040	2.39

All Purad Socket Fittings are provided as General Grade Fittings.
Socket Fittings must be used with SDR21 Pipe, SDR33 Pipe is not allowed.

Purad PVDF Socket Tee

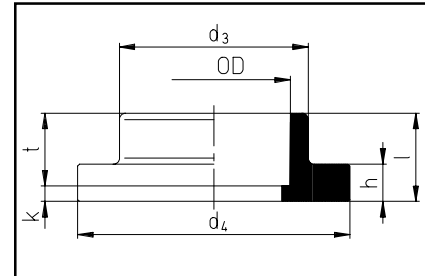
- Socket Fusion
- Molded



OD		Dimensions				PN 16		
[mm]	[inch]	dsp	k	t	l	Agru Code	Asahi Part #	Weight (lbs)
20	1/2"	1.14	0.57	0.61	2.36	30.056.0020.07	5985005	0.11
25	3/4"	1.38	0.65	0.69	2.68	30.056.0025.07	5985007	0.16
32	1"	1.69	0.81	0.77	3.15	30.056.0032.07	5985010	0.27
40	1 1/4"	2.05	1.00	0.85	3.70	30.056.0040.07	5985012	0.40
50	1 1/2"	2.52	1.18	0.93	4.25	30.056.0050.07	5985015	0.75
63	2"	3.19	1.36	1.14	4.92	30.056.0063.07	5985020	1.20
75	2 1/2"	3.62	1.65	1.36	6.02	30.056.0075.07	5985025	1.67
90	3"	4.45	2.11	1.50	7.20	30.056.0090.07	5985030	2.88
110	4"	5.24	2.42	1.67	8.19	30.056.0110.07	5985040	4.43

Purad PVDF Socket End

- Socket Fusion
- Molded

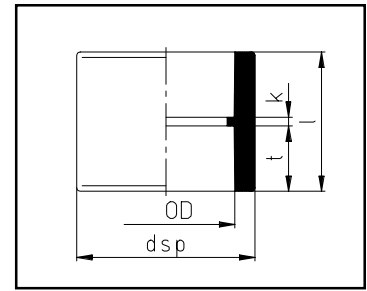


OD		Dimensions						PN 16		
[mm]	[inch]	d ₃	d ₄	h	l	k	t	Agru Code	Asahi Part #	Weight (lbs)
20	1/2"	1.06	1.75	0.24	0.83	0.20	0.63	30.052.0020.07	5990005	0.06
25	3/4"	1.30	2.13	0.28	0.87	0.20	0.67	30.052.0025.07	5990007	0.06
32	1"	1.61	2.50	0.28	0.98	0.20	0.79	30.052.0032.07	5990010	0.14
40	1 1/4"	1.97	2.81	0.31	1.02	0.20	0.83	30.052.0040.07	5990012	0.21
50	1 1/2"	2.40	3.25	0.31	1.18	0.20	0.98	30.052.0050.07	5990015	0.29
63	2"	2.99	3.95	0.35	1.30	0.20	1.10	30.052.0063.07	5990020	0.40
75	2 1/2"	3.54	4.61	0.39	1.46	0.20	1.26	30.052.0075.07	5990025	0.39
90	3"	4.29	5.21	0.43	1.61	0.20	1.42	30.052.0090.07	5990030	0.88
110	4"	5.16	6.22	0.47	1.89	0.20	1.69	30.052.0110.07	5990040	1.23

All Purad Socket Fittings are provided as General Grade Fittings.
 Socket Fittings must be used with SDR21 Pipe, SDR33 Pipe is not allowed.

Purad PVDF Socket Coupling

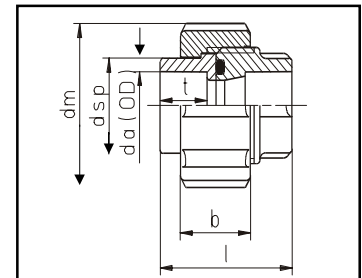
- Socket Fusion
- Molded



OD		Dimensions				PN 16		
[mm]	[inch]	dsp	l	k	t	Agru Code	Asahi Part #	Weight (lbs)
20	½"	0.94	0.16	0.57	1.30	30.053.0020.07	5986005	0.03
25	¾"	1.14	0.16	0.61	1.38	30.053.0025.07	5986007	0.06
32	1"	1.38	0.16	0.69	1.54	30.053.0032.07	5986010	0.07
40	1¼"	1.69	0.16	0.77	1.69	30.053.0040.07	5986012	0.11
50	1½"	2.05	0.20	0.83	1.85	30.053.0050.07	5986015	0.15
63	2"	2.52	0.24	0.93	2.05	30.053.0063.07	5986020	0.26
75	2½"	3.19	0.16	1.10	2.36	30.053.0075.07	5986025	0.49
90	3"	3.62	0.20	1.28	2.76	30.053.0090.07	5986030	0.62
110	4"	4.45	0.20	1.44	3.07	30.053.0110.07	5986040	1.28

Purad PVDF Socket T-24 Union

- Socket Fusion
- Molded, FPM O'Ring



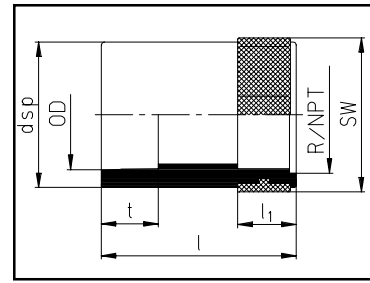
OD		Dimensions						PN 16		
[mm]	[inch]	s	l	l ₁	l ₂	dm	b	Agru Code	Asahi Part #	Weight (lbs)
20	½"	0.07	4.21	0.98	1.40	1.85	0.94	30.024.1120.07	5996005	0.21
25	¾"	0.07	4.41	0.96	1.44	2.24	1.02	30.024.1125.07	5996007	0.27
32	1"	0.09	4.69	1.04	1.55	2.52	1.18	30.024.1132.07	5996010	0.32
40	1¼"	0.09	4.92	0.98	1.48	3.07	1.22	30.024.1140.07	5996012	0.43
50	1½"	0.12	5.12	0.98	1.57	3.50	1.38	30.024.1150.07	5996015	0.66
63	2"	0.12	5.35	0.98	1.59	4.29	1.54	30.024.1163.07	5996020	0.89

- Also Available with EPDM O'Rings. Please Consult Factory.

All Purad Socket Fittings are provided as General Grade Fittings.
Socket Fittings must be used with SDR21 Pipe, SDR33 Pipe is not allowed.

Purad PVDF Socket F. Adapter

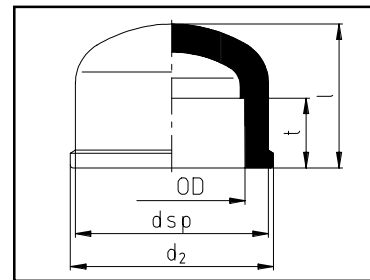
- Socket Fusion
- Molded Female NPT Adapter



OD		Dimensions					PN 16		
[mm]	[inch]	dsp	l	t	l ₁	SW	Agru Code	Asahi Part #	Weight (lbs)
20	½"	1.16	1.77	0.57	0.63	1.26	30.034.2021.07	5983005	0.08
25	¾"	1.38	1.99	0.63	0.71	1.61	30.034.2526.07	5983007	0.13
32	1"	1.67	2.24	0.71	0.79	1.81	30.034.3233.07	5983010	0.21
40	1¼"	2.05	2.46	0.81	0.94	2.17	30.034.4041.07	5983012	0.32
50	1½"	2.52	2.68	0.93	1.02	2.76	30.034.5051.07	5983015	0.52
63	2"	3.15	2.91	1.08	1.18	3.35	30.034.6364.07	5983020	0.87

Purad PVDF Socket Cap

- Socket Fusion
- Molded

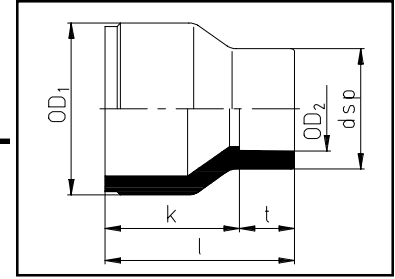


OD		Dimensions				PN 16		
[mm]	[inch]	dsp	d ₂	t	l	Agru Code	Asahi Part #	Weight (lbs)
20	½"	1.14	1.26	0.61	1.06	30.054.0020.07	5981005	0.04
25	¾"	1.38	1.46	0.69	1.18	30.054.0025.07	5981007	0.06
32	1"	1.69	1.81	0.77	1.38	30.054.0032.07	5981010	0.09
40	1¼"	2.05	2.24	0.89	1.54	30.054.0040.07	5981012	0.15
50	1½"	2.52	2.72	0.94	1.93	30.054.0050.07	5981015	0.27
63	2"	3.19	3.39	1.10	2.32	30.054.0063.07	5981020	0.44

All Purad Socket Fittings are provided as General Grade Fittings.
Socket Fittings must be used with SDR21 Pipe, SDR33 Pipe is not allowed.

Purad Socket Conc. Reducer

- Socket Fusion
- Molded

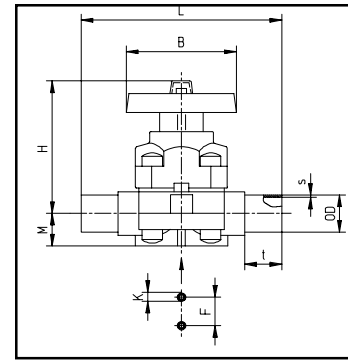


OD		Dimensions			PN 16		
[mm]	[inch]	l	k	t	Agri Code	Asahi Part #	Weight (lbs)
25/20	¾ x ½	1.14	1.57	0.91	30.057.2520.07	5995101	0.05
32/20	1 x ½	1.14	1.73	1.18	30.057.3220.07	5995130	0.07
32/25	1 x ¾	1.38	1.73	1.06	30.057.3225.07	5995131	0.08
40/20	1¼ x ½	1.14	1.93	1.34	30.057.4020.07	5995166	0.09
40/25	1¼ x ¾	1.38	1.93	1.30	30.057.4025.07	5995167	0.10
40/32	1¼ x 1	1.69	1.93	1.18	30.057.4032.07	5995168	0.12
50/20	1½ x ½	1.14	2.17	1.54	30.057.5020.07	5995208	0.14
50/25	1½ x ¾	1.38	2.17	1.50	30.057.5025.07	5995210	0.15
50/32	1½ x 1	1.69	2.17	1.46	30.057.5032.07	5995211	0.16
50/40	1½ x 1¼	2.05	2.17	1.54	30.057.5040.07	5995212	0.20
63/25	2 x ¾	1.38	2.52	1.85	30.057.6325.07	5995248	0.24
63/32	2 x 1	1.69	2.52	1.73	30.057.6332.7	5995249	0.24
63/40	2 x 1¼	2.05	2.52	1.69	30.057.6340.07	5995250	0.28
63/50	2 x 1½	2.52	2.52	1.54	30.057.6350.07	5995251	0.33
75/63	2½ x 2	3.19	2.52	1.38	30.057.7563.07	5995292	0.45
90/63	3 x 2	3.19	3.43	2.32	30.057.9063.07	5995338	0.78
90/75	3 x 2½	3.62	3.43	2.13	30.057.9075.07	5995339	0.81
110/63	4 x 2	3.19	3.43	2.32	30.057.1163.07	5995420	1.03
110/90	4 x 3	4.45	3.43	2.09	30.057.1190.07	5995422	1.27

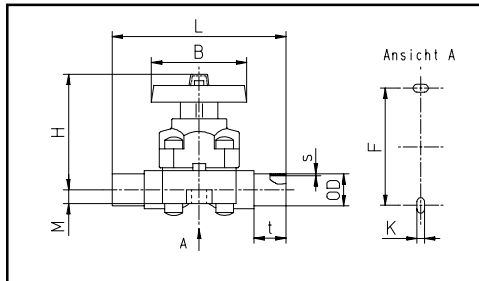
All Purad Socket Fittings are provided as General Grade Fittings.
 Socket Fittings must be used with SDR21 Pipe, SDR33 Pipe is not allowed.

Purad PVDF Type 342 Diaphragm Valve

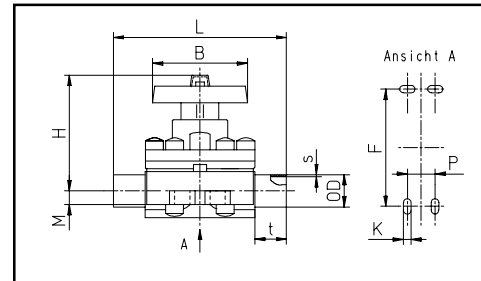
- IR / Butt Fusion
- Manual Diaphragm Valve
EPDM Backed PTFE Diaphragm



Dimensions: 20mm (1/2") through 63mm (2")



Dimensions 75mm (2 1/2") through 90mm (3")



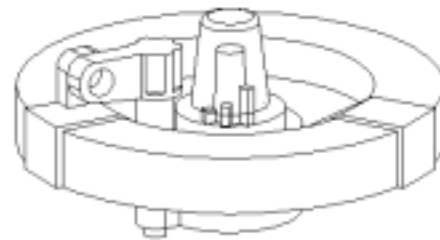
Dimension 110mm

OD		Dimensions										PN 10 / S 10 / SDR 21		
[mm]	[inch]	DN	s	t	1B	H	M	F	K	L	P	Agru Code	Asahi Part #	Weight (lbs)
20	1/2"	15	0.075	1.417	3.346	3.937	0.669	0.957	M6	5.236	-	342.1020.21	1131005	1.04
25	3/4"	20	0.075	1.417	3.346	3.937	0.669	0.957	M6	5.669	-	342.1025.21	1131007	1.06
32	1"	25	0.094	1.417	3.346	4.213	0.827	0.957	M6	6.063	-	342.1032.21	1131010	1.57
40	1 1/4"	32	0.094	1.811	5.315	5.669	1.299	1.732	M8	7.598	-	342.1040.21	1131012	3.75
50	1 1/2"	40	0.118	1.811	5.315	5.669	1.299	1.732	M8	7.638	-	342.1050.21	1131015	3.75
63	2"	50	0.118	1.811	5.315	6.693	1.575	1.732	M8	8.819	-	342.1063.21	1131020	5.42
75	2 1/2"	65	0.142	1.457	9.213	10.00	0.984	9.055	M12	11.18	-	342.1075.21	1131025	11.57
90	3"	80	0.169	1.457	9.213	10.00	0.984	9.055	M12	11.81	-	342.1090.21	1131030	11.58
110	4"	100	0.209	1.969	9.213	12.60	0.984	11.024	M12	13.39	3.35	342.1011.21	1131040	22.38

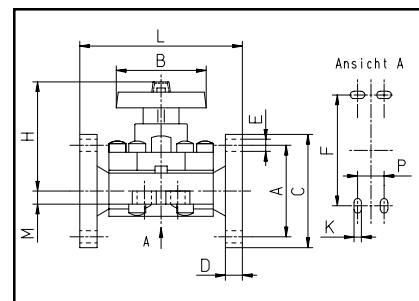
PN10 / 150 psi Pressure Rating
SDR21 Spigot Wall Thickness

Unique Handle Design:

- Integral Locking Handle can be locked in multiple positions to pre-vent unauthorized cycling
- Locking Handle spring loaded for easy locking/unlocking
- Position indication for 25%, 50% and 75% open positions



Purad PVDF Type 342 Diaphragm Valve



- **ANSI Flanged**
- **Manual Diaphragm Valve**
EPDM Backed PTFE Diaphragm

OD		Dimensions									PN 10/ISO S-10/SDR21		
[mm]	[inch]	DN	C	B	H	M	F	K	L	P	Agru Code	Asahi Part #	Weight (lbs)
90	3"	80	7.874	9.213	10.000	0.984	9.055	M12	12.205	-	342.2090.21	1181030	15.74
110	4"	100	9.055	9.213	12.598	0.984	11.024	M12	13.780	3.349	342.20911.21	1181040	28.84

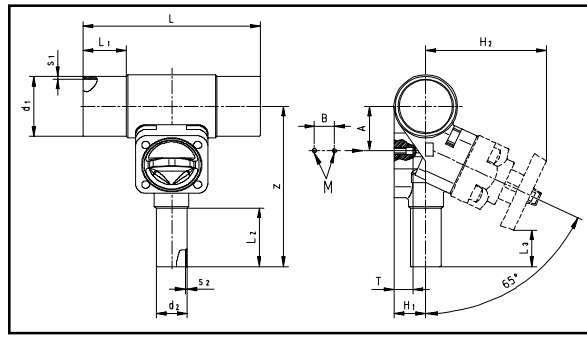
PN10 / 150 psi Pressure Rating

Type 342 Diaphragm Valve Flow Characteristics

OD		Cv at Percent (%) Open			
[mm]	[inch]	25%	50%	75%	100%
20	½"	2.52	4.00	4.76	5.04
25	¾"	3.29	5.18	6.16	6.51
32	1"	7.70	12.32	14.70	15.47
40	1¼"	15.75	25.06	29.96	31.50
50	1½"	17.50	28.00	33.25	35.00
63	2"	30.66	48.65	58.17	61.25
75	2½"	In Preparation			
90	3"				
110	4"				

Purad PVDF Type 343 T-Diaphragm Valve

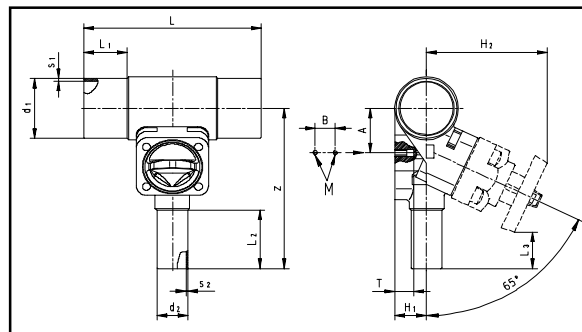
- IR / Butt Fusion
- Manual Zero Static Valve
EPDM Backed PTFE Diaphragm



OD		Dimensions						PN 10 / S 10 / SDR 21			
[mm]	[inch]	s1	s2	L	L1	L2	L3	Code	Asahi Part #	Cv	Weight (lbs)
20 / 20	½" / ½"	0.075	0.075	6.462	1.418	2.640	1.497	343.2020.21	1246005	o.r	o.r
25 / 20	¾" / ½"	0.075	0.075	6.462	1.418	2.660	1.497	343.2520.21	1246101	4.06	1.23
25 / 25	¾" / ¾"	0.075	0.075	6.462	1.418	2.758	1.497	343.2525.21	1246007	4.06	1.23
32 / 20	1" / ½"	0.095	0.075	6.462	1.418	2.285	1.418	343.3220.21	1246130	12.88	1.93
32 / 25	1" / ¾"	0.095	0.075	6.462	1.418	2.364	1.418	343.3225.21	1246131	13.16	1.93
32 / 32	1" / 1"	0.095	0.095	6.462	1.418	2.403	1.418	343.3232.21	1246010	13.65	1.93
40 / 20	1¼" / ½"	0.095	0.075	7.250	1.812	2.285	1.418	343.4020.21	1246166	13.93	2.02
40 / 25	1¼" / ¾"	0.095	0.075	7.250	1.812	2.364	1.418	343.4025.21	1246167	14.35	2.02
40 / 32	1¼" / 1"	0.095	0.095	7.250	1.812	2.403	1.418	343.4032.21	1246168	14.70	2.02
50 / 20	1½" / ½"	0.118	0.075	7.250	1.812	2.325	1.418	343.5020.21	1246208	15.12	2.16
50 / 25	1½" / ¾"	0.118	0.075	7.250	1.812	2.364	1.418	343.5025.21	1246210	15.40	2.16
50 / 32	1½" / 1"	0.118	0.095	7.250	1.812	2.403	1.418	343.5032.21	1246211	15.96	2.16
63 / 20	2" / ½"	0.118	0.075	7.250	1.812	2.285	1.418	343.6320.21	1246246	15.89	2.34
63 / 25	2" / ¾"	0.118	0.075	7.250	1.812	2.364	1.418	343.6325.21	1246248	16.31	2.34
63 / 32	2" / 1"	0.118	0.095	7.250	1.812	2.403	1.418	343.6332.21	1246249	16.80	2.34
63 / 40	2" / 1¼"	0.118	0.095	9.298	1.812	3.487	1.970	343.6340.21	N/A	30.45	6.72
63 / 50	2" / 1½"	0.118	0.118	9.298	1.812	3.684	1.970	343.6350.21	1246251	35.21	6.70
63 / 63	2" / 2"	0.118	0.118	9.298	1.812	3.940	1.970	343.6363.21	1246020	40.18	6.70
75 / 25	2½" / ¾"	0.142	0.075	8.274	1.300	2.384	1.497	343.7525.21	1246286	17.01	2.72
75 / 32	2½" / 1"	0.142	0.095	8.274	1.300	2.522	1.497	343.7532.21	1246289	17.50	2.73
75 / 40	2½" / 1¼"	0.142	0.095	8.274	1.300	3.487	1.970	343.7540.21	1246290	31.29	7.00
75 / 50	2½" / 1½"	0.142	0.118	8.274	1.300	3.684	1.970	343.7550.21	1246291	36.40	6.98
75 / 63	2½" / 2"	0.142	0.118	8.274	1.300	3.940	1.970	343.7563.21	1246292	40.74	6.92
90 / 25	3" / ¾"	0.169	0.075	8.274	1.300	2.384	1.497	343.9025.21	1246333	17.43	3.14
90 / 32	3" / 1"	0.169	0.095	8.274	1.300	2.522	1.497	343.9032.21	1246336	18.06	3.15
90 / 40	3" / 1¼"	0.169	0.095	8.274	1.300	3.467	1.970	343.9040.21	1246335	32.20	7.42
90 / 50	3" / 1½"	0.169	0.118	8.274	1.300	3.684	1.970	343.9050.21	1246337	37.24	7.41
90 / 63	3" / 2"	0.169	0.118	8.274	1.300	3.940	1.970	343.9063.21	1246338	42.07	7.35
110 / 25	4" / ¾"	0.209	0.075	8.274	1.300	2.266	1.497	343.1125.21	1246404	17.92	3.83
110 / 32	4" / 1"	0.209	0.095	8.274	1.300	2.403	1.497	343.1132.21	1246401	18.55	3.81
110 / 50	4" / 1½"	0.209	0.118	8.274	1.300	3.684	1.970	343.1150.21	1246415	38.36	8.14
110 / 63	4" / 2"	0.209	0.118	8.274	1.300	3.940	1.970	343.1163.21	1246420	43.61	7.79
OD		Dimensions						PN 10 / S 10 x S 16 / SDR 33 x 21			
[mm]	[inch]	s1	s2	L	L1	L2	L3	Code	Asahi Part #	Cv	Weight (lbs)
90 / 25	3" / ¾"	0.110	0.075	8.274	1.300	2.384	1.497	343.9025.31	1248333	17.43	2.94
90 / 32	3" / 1"	0.110	0.095	8.274	1.300	2.522	1.497	343.9032.31	1248336	18.06	2.95
90 / 40	3" / 1¼"	0.110	0.095	8.274	1.300	3.487	1.970	343.9040.31	1248335	32.20	7.22
90 / 50	3" / 1½"	0.110	0.118	8.274	1.300	3.684	1.970	343.9050.31	1248337	37.24	7.21
90 / 63	3" / 2"	0.110	0.118	8.274	1.300	3.940	1.970	343.9063.31	1248338	42.07	7.15
110 / 25	4" / ¾"	0.134	0.075	8.274	1.300	2.266	1.497	343.1125.31	1248404	17.92	3.58
110 / 32	4" / 1"	0.134	0.095	8.274	1.300	2.403	1.497	343.1132.31	1248401	18.55	3.57
110 / 50	4" / 1½"	0.134	0.118	8.274	1.300	3.684	1.970	343.1150.31	1248415	38.36	7.86
110 / 63	4" / 2"	0.134	0.118	8.274	1.300	3.940	1.970	343.1163.31	1248420	43.61	7.52

Purad PVDF Type 343 T-Diaphragm Valve

- IR / Butt Fusion
 - Manual Zero Static Valve
- EPDM Backed PTFE Diaphragm**



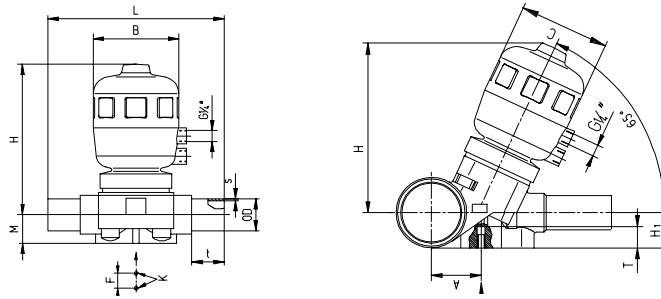
OD		Dimensions						PN 10 / S 10 / SDR 21			
[mm]	[inch]	H1	H2	Z	T	A	M	Code	Asahi Part #	Cv	Weight (lbs)
20 / 20	½" / ½"	0.512	4.649	5.674	0.788	1.024	M6	343.2020.21	1246005	o.r	o.r
25 / 20	¾" / ½"	0.552	4.649	5.674	0.788	1.024	M6	343.2520.21	1246101	4.06	1.23
25 / 25	¾" / ¾"	0.552	4.649	5.674	0.788	1.024	M6	343.2525.21	1246007	4.06	1.23
32 / 20	1" / ½"	0.709	5.043	5.969	0.788	1.182	M6	343.3220.21	1246130	12.88	1.93
32 / 25	1" / ¾"	0.709	5.043	5.969	0.788	1.182	M6	343.3225.21	1246131	13.16	1.93
32 / 32	1" / 1"	0.709	5.043	5.969	0.788	1.182	M6	343.3232.21	1246010	13.65	1.93
40 / 20	1¼" / ½"	0.847	5.043	6.166	0.788	1.379	M6	343.4020.21	1246166	13.93	2.02
40 / 25	1¼" / ¾"	0.847	5.043	6.166	0.788	1.379	M6	343.4025.21	1246167	14.35	2.02
40 / 32	1¼" / 1"	0.847	5.043	6.166	0.788	1.379	M6	343.4032.21	1246168	14.70	2.02
50 / 20	1½" / ½"	1.044	5.043	6.324	0.788	1.537	M6	343.5020.21	1246208	15.12	2.16
50 / 25	1½" / ¾"	1.044	5.043	6.324	0.788	1.537	M6	343.5025.21	1246210	15.40	2.16
50 / 32	1½" / 1"	1.044	5.043	6.324	0.788	1.537	M6	343.5032.21	1246211	15.96	2.16
63 / 20	2" / ½"	1.300	5.043	6.619	0.788	1.832	M6	343.6320.21	1246246	15.89	2.34
63 / 25	2" / ¾"	1.300	5.043	6.619	0.788	1.832	M6	343.6325.21	1246248	16.31	2.34
63 / 32	2" / 1"	1.300	5.043	6.619	0.788	1.832	M6	343.6332.21	1246249	16.80	2.34
63 / 40	2" / 1¼"	1.300	7.841	9.574	2.246	2.364	M8	343.6340.21	N/A	30.45	6.72
63 / 50	2" / 1½"	1.300	7.841	9.574	2.246	2.364	M8	343.6350.21	1246251	35.21	6.70
63 / 63	2" / 2"	1.300	7.841	9.535	2.246	2.364	M8	343.6363.21	1246020	40.18	6.70
75 / 25	2½" / ¾"	0.906	5.240	7.053	1.300	2.206	M6	343.7525.21	1246286	17.01	2.72
75 / 32	2½" / 1"	0.906	5.240	7.053	1.300	2.206	M6	343.7532.21	1246289	17.50	2.73
75 / 40	2½" / 1¼"	1.537	7.841	9.771	2.364	2.561	M8	343.7540.21	1246290	31.29	7.00
75 / 50	2½" / 1½"	1.537	7.841	9.771	2.364	2.561	M8	343.7550.21	1246291	36.40	6.98
75 / 63	2½" / 2"	1.537	7.841	9.771	2.364	2.561	M8	343.7563.21	1246292	40.74	6.92
90 / 25	3" / ¾"	0.926	5.319	7.407	1.418	2.561	M6	343.9025.21	1246333	17.43	3.14
90 / 32	3" / 1"	0.926	5.319	7.407	1.418	2.561	M6	343.9032.21	1246336	18.06	3.15
90 / 40	3" / 1¼"	1.832	7.841	10.05	2.561	2.837	M8	343.9040.21	1246335	32.20	7.42
90 / 50	3" / 1½"	1.832	7.841	10.05	2.561	2.837	M8	343.9050.21	1246337	37.24	7.41
90 / 63	3" / 2"	1.832	7.841	10.05	2.561	2.837	M8	343.9063.21	1246338	42.07	7.35
110 / 25	4" / ¾"	1.320	5.516	7.801	1.694	2.797	M6	343.1125.21	1246404	17.92	3.83
110 / 32	4" / 1"	1.320	5.516	7.801	1.694	2.797	M6	343.1132.21	1246401	18.55	3.81
110 / 50	4" / 1½"	2.226	7.841	10.52	2.955	2.837	M8	343.1150.21	1246415	38.36	8.14
110 / 63	4" / 2"	2.226	7.841	10.52	2.955	2.837	M8	343.1163.21	1246420	43.61	7.79
OD		Dimensions						PN 10 / S 10 x S 16 / SDR 33 x 21			
[mm]	[inch]	H1	H2	Z	T	A	M	Code	Asahi Part #	Cv	Weight (lbs)
90 / 25	3" / ¾"	0.926	5.319	7.407	1.418	2.561	M6	343.9025.31	1248333	17.43	2.94
90 / 32	3" / 1"	0.926	5.319	7.407	1.418	2.561	M6	343.9032.31	1248336	18.06	2.95
90 / 40	3" / 1¼"	1.832	7.841	10.05	2.561	2.837	M8	343.9040.31	1248335	32.20	7.22
90 / 50	3" / 1½"	1.832	7.841	10.05	2.561	2.837	M8	343.9050.31	1248337	37.24	7.21
90 / 63	3" / 2"	1.832	7.841	10.05	2.561	2.837	M8	343.9063.31	1248338	42.07	7.15
110 / 25	4" / ¾"	1.320	5.516	7.801	1.694	2.797	M6	343.1125.31	1248404	17.92	3.58
110 / 32	4" / 1"	1.320	5.516	7.801	1.694	2.797	M6	343.1132.31	1248401	18.55	3.57
110 / 50	4" / 1½"	2.226	7.841	10.52	2.955	2.837	M8	343.1150.31	1248415	38.36	7.86
110 / 63	4" / 2"	2.226	7.841	10.52	2.955	2.837	M8	343.1163.31	1248420	43.61	7.52

Purad PVDF Type 342 / 343 Diaphragm Valve Options

● Pneumatic Actuators

For Type 342 and 343 Valves

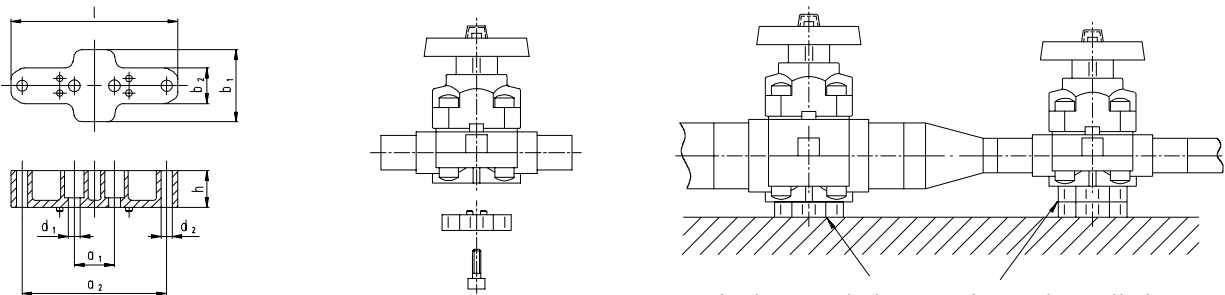
Available Normal Open, Normally Closed or Double Acting



● Mounting Plates

For Type 342 and 343 Valves

Converts Diaphragm Valves to Fixed Anchors

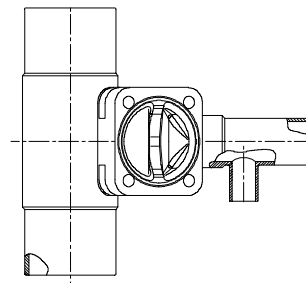


Single or Multiple Mounting Pad Installation

● Zero Static Flushing Port

For Type 343 Valves

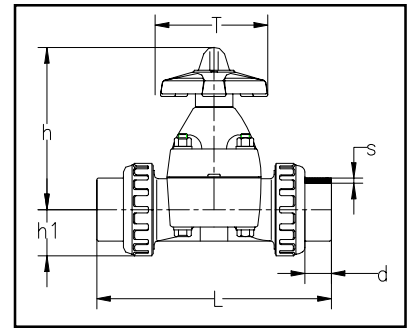
Flushing branch to prevent stagnation



Please consult factory for additional details on listed options

PVDF Type 14 Diaphragm Valve

- IR / Butt Fusion
- Manual True Union Diaphragm Valve
EPDM Backed PTFE Diaphragm

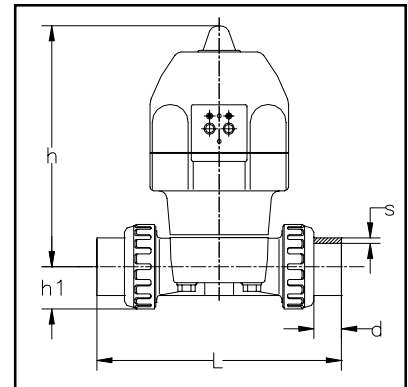


OD			Dimensions					PN10			
[mm]	[inch]	DN	L	h	h1	T	d*	Agru Code	Asahi Part #	s	Weight (lbs)
20	1/2"	15	5.906	4.09	0.77	3.39	0.728	N/A	1165005	0.075	C.F.
25	3/4"	20	6.772	4.17	0.69	3.46	0.866	N/A	1165007	0.075	C.F.
32	1"	25	7.677	4.37	0.73	3.66	0.886	N/A	1165010	0.094	C.F.
40	1 1/4"	32	8.346	4.57	0.89	3.82	1.024	N/A	1165012	0.094	C.F.
50	1 1/2"	40	10.87	6.97	1.08	5.67	1.260	N/A	1165015	0.118	C.F.
63	2"	50	12.09	7.52	1.42	6.22	1.417	N/A	1165020	0.118	C.F.

* Dimension for spigot portion of end connector only, does not include centering ring.

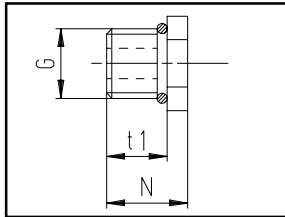
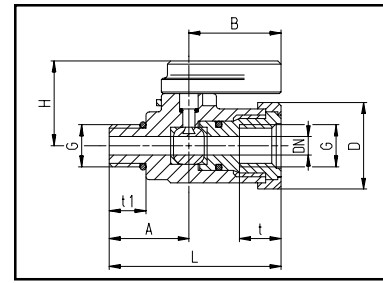
PVDF Type 14 Diaphragm Valve Options

- Pneumatic Actuators
Available Normal Open, Normally Closed or Double Acting
Consult Factory for Details
Not Interchangeable with Type 342 Valves

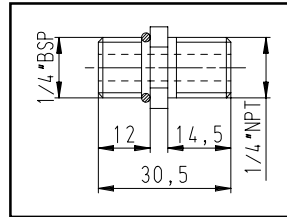


Purad PVDF Sample Valve

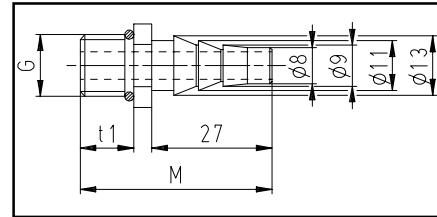
- Threaded Valve
- Molded



Plug



Thread Adapter



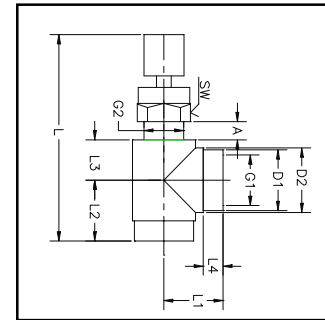
Hose Adapter

OD		Dimensions											PN10		
[mm]	[inch]	DN	A	B	D	H	t	Weight (lbs)	G	t1	L	M	N	Agru Code	Asahi Part #
10	1/4	0.236	1.024	1.142	1.102	1.043	0.531	0.07	1/4	0.571	2.303	1.752	0.709	337.1000.11	1068003

-Sample Valve provided with all three adapter pieces.

Purad PVDF Needle Valve

- Female Threaded Valve
- Molded



OD/G1		Dimensions									
[mm]	[inch]	G2	L	L1	L2	L3	L4	a	D1	D2	SW
16	1/4"	M16 x 1	3.82	0.984	1.14	0.561	0.314	0.275	0.787	0.984	0.866
20	1/2"	M20 x 1.5	4.33	1.18	1.18	0.709	0.393	0.354	1.1	1.26	1.06

-Needle Valve shown as Female x Female NPT style.

-Also Available in Male NPT x Female NPT and Butt/IR x Female NPT, Consult Factory for Details.