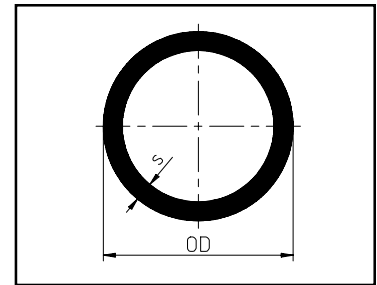


# PolyPure Pipe

- IR/Butt Fusion
- Extruded



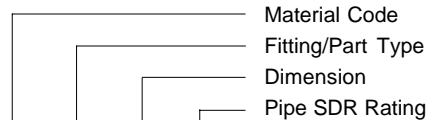
OD		PN 10 / ISO S-5 / SDR 11			
[mm]	[inch]	Agru Code	Asahi Part #	s	Weight (lbs/m)
20	½"	705.0020.11	6301005	0.098	0.30
25	¾"	705.0025.11	6301007	0.106	0.41
32	1"	705.0032.11	6301010	0.114	0.57
40	1 ¼"	705.0040.11	6301012	0.146	0.91
50	1 ½"	705.0050.11	6301015	0.181	1.41
63	2"	705.0063.11	6301020	0.228	2.23
90	3"	705.0090.11	6301030	0.323	4.45
110	4"	705.0110.11	6301040	0.394	6.64

- Pipe supplied in 5 meter lengths (5 meters equals 16.4 ft).
- Pipe and fitting OD size is metric, inch OD provided as nominal size only.
- PN10 equals 150 psi pressure rating.

Components listed in this section contain both Agru Code identifications and Asahi/America part numbers. Either can be used to identify the requested component. When using the Agru Code, be sure to preface the numbers with the Material Identification Code.

## PolyPure Material Code = 16

### Code identification



XX . XXX .XXXX .XX

### Example:

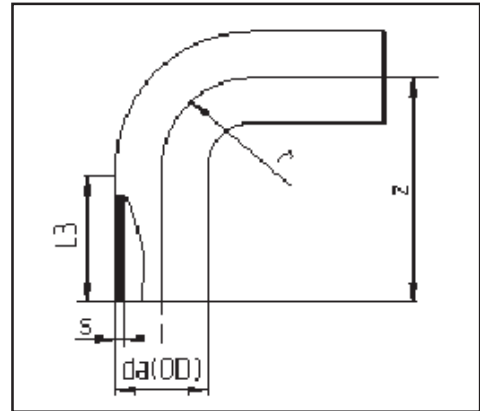
- PolyPure Pipe, OD 63mm, SDR11 ..... Code 16.705.0063.11

PolyPure® Natural Polypropylene

# PolyPure

## New Extended Leg 90°

- IR/Butt Fusion
- Molded



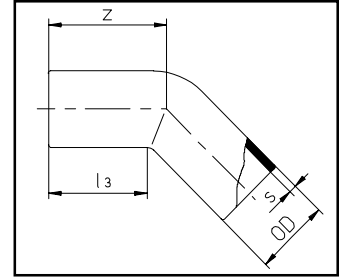
PolyPure, Natural  
Polypropylene

OD		Dimensions		PN 10/ ISO S-5/ SDR 11				
(MM)	(Inch)	r	z	l3	Agru Code	Asahi Part #	s	Weight (lbs)
20	½"	0.787	2.323	1.457	16.068.0020.11	6302005	0.075	0.02
25	¾"	0.984	2.618	1.535	16.068.0025.11	6302007	0.091	0.04
32	1"	1.260	3.091	1.732	16.068.0032.11	6302010	0.114	0.09
40	1¼"	1.575	3.602	1.929	16.068.0040.11	6302012	0.146	0.18
50	1½"	1.969	4.213	2.205	16.068.0050.11	6302015	0.181	0.31
63	2"	2.480	5.000	2.520	16.068.0063.11	6302020	0.228	0.57
90	3"	3.543	6.535	2.953	16.068.0090.11	6302030	0.323	1.50
110	4"	4.331	7.421	2.953	16.068.0110.11	6302040	0.394	2.07

Updated 6/1/07  
28

# PolyPure 45

- IR/Butt Fusion
- Molded

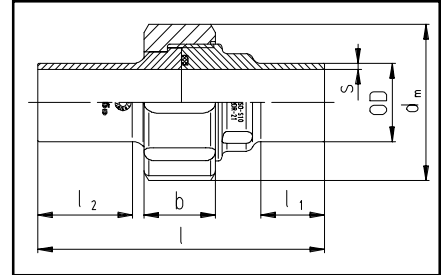


OD		Dimensions		PN 10 / ISO S-5 / SDR 11			
[mm]	[inch]	$l_3$	z	Agru Code	Asahi Part #	s	Weight (lbs)
20	1/2"	1.535	1.732	060.0020.11	6314005	0.098	0.02
25	3/4"	1.654	1.890	060.0025.11	6314007	0.106	0.04
32	1"	1.929	2.244	060.0032.11	6314010	0.114	0.07
40	1 1/4"	2.087	2.480	060.0040.11	6314012	0.146	0.11
50	1 1/2"	2.244	2.756	060.0050.11	6314015	0.181	0.22
63	2"	2.520	3.150	060.0063.11	6314020	0.228	0.37
90	3"	3.228	4.094	060.0090.11	6314030	0.323	0.95
110	4"	3.228	4.252	060.0110.11	6314040	0.394	1.96

PolyPure® Natural Polypropylene

# PolyPure T-24 Union

- IR/Butt Fusion
- Molded, EPDM O'Ring

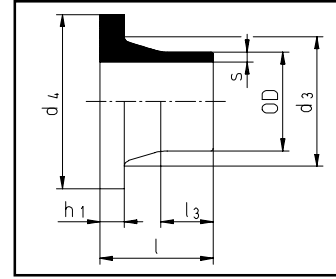


OD		Dimensions						PN 10 / ISO S-5 / SDR 11		
[mm]	[inch]	s	l	$l_1$	$l_2$	$d_m$	b	Agru Code	Asahi Part #	Weight (lbs)
20	1/2"	0.075	4.252	0.945	1.398	1.850	0.945	024.0120.11	6333005	0.21
25	3/4"	0.075	4.488	0.945	1.437	2.244	1.024	024.0125.11	6333007	0.27
32	1"	0.094	4.724	0.984	1.547	2.520	1.181	024.0132.11	6333010	0.32
40	1 1/4"	0.094	4.961	0.984	1.476	3.071	1.220	024.0140.11	6333012	0.43
50	1 1/2"	0.118	5.197	0.984	1.575	3.504	1.378	024.0150.11	6333015	0.66
63	2"	0.118	5.433	0.984	1.594	4.291	1.535	024.0163.11	6333020	0.89

- Type G Union replaces Standard Unions beginning 2002. Consult Factory for Availability.  
 - Also Available with FPM O'Rings, use Base Number 6334- - - .

# PolyPure ANSI 150 Stub End

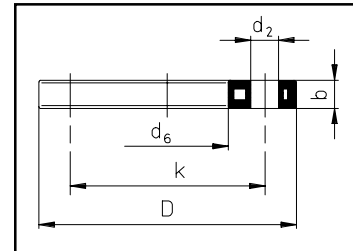
- IR/Butt Fusion
- Molded



OD		Dimensions					PN 10 / ISO S-5 / SDR 11			
[mm]	[inch]	d <sub>3</sub>	d <sub>4</sub>	l	h <sub>1</sub>	l <sub>3</sub>	Agro Code	Asahi Part #	s	Weight (lbs)
20	½"	1.063	1.752	1.969	0.276	1.181	012.1020.11	6330005	0.098	0.04
25	¾"	1.299	2.130	1.969	0.354	0.984	012.1025.11	6330007	0.106	0.07
32	1"	1.575	2.500	1.969	0.394	0.709	012.1032.11	6330010	0.114	0.11
40	1¼"	1.969	2.815	1.969	0.433	0.787	012.1040.11	6330012	0.146	0.13
50	1½"	2.402	3.248	1.969	0.472	0.787	012.1050.11	6330015	0.181	0.18
63	2"	2.953	3.953	1.969	0.551	0.709	012.1063.11	6330020	0.228	0.29
90	3"	4.134	5.213	3.150	0.669	1.575	012.1090.11	6330030	0.323	0.73
110	4"	4.921	6.713	3.150	0.709	1.496	012.1110.11	6330040	0.394	0.99

# PP ANSI 150 Backing Ring

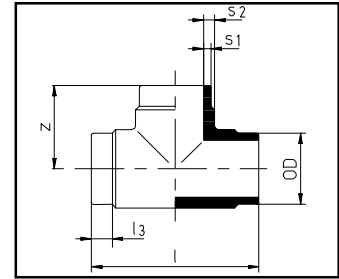
- with Steel Insert
- Molded from Pigmented PP



OD		Dimensions					up to a pressure rate of 16 bar acc. DIN 16962 part5				
[mm]	[inch]	D	k	d <sub>6</sub>	d <sub>2</sub>	b	Bolt Holes	Torque [ft/lbs]	Agro Code	Asahi Part #	Weight (lbs)
20	½"	3.740	2 3/8"	1.102	5/8"	0.472	4	11	11.013.0020.11	5046005	0.49
25	¾"	4.016	2 3/4"	1.339	5/8"	0.472	4	11	11.013.0025.11	5046007	0.62
32	1"	4.488	3 1/8"	1.654	5/8"	0.630	4	11	11.013.0032.11	5046010	0.93
40	1¼"	5.118	3 1/2"	2.008	5/8"	0.630	4	18	11.013.0040.11	5046012	1.12
50	1½"	5.236	3 7/8"	2.441	5/8"	0.709	4	26	11.013.0050.11	5046015	1.32
63	2"	6.378	4 3/4"	3.071	3/4"	0.709	4	30	11.013.0063.11	5046020	1.92
90	3"	7.638	6"	4.370	3/4"	0.709	4	30	11.013.0090.11	5046030	2.43
110	4"	9.016	7 1/2"	5.236	3/4"	0.709	8	30	11.013.0110.11	5046040	3.57

# PolyPure Tee

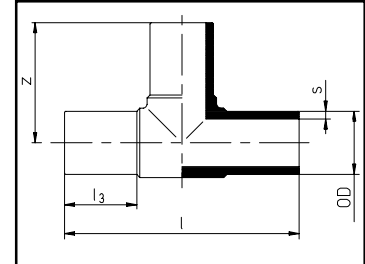
- IR/Butt Fusion
- Molded



OD		Dimensions			PN 10 / ISO S-5 / SDR 11				
[mm]	[inch]	l	z	l <sub>3</sub>	Agru Code	Asahi Part #	s1	s2	Weight (lbs)
20	½"	2.756	1.378	0.551	006.0020.11	6311005	0.098	0.130	0.04
25	¾"	3.150	1.575	0.591	006.0025.11	6311007	0.106	0.157	0.07
32	1"	3.465	1.811	0.630	006.0032.11	6311010	0.114	0.177	0.09
40	1¼"	3.543	1.969	0.591	006.0040.11	6311012	0.146	0.268	0.15
50	1½"	3.937	2.047	0.531	006.0050.11	6311015	0.181	0.276	0.22
63	2"	4.921	2.559	0.591	006.0063.11	6311020	0.228	0.421	0.51
90	3"	8.150	4.173	1.496	006.0090.11	6311030	0.323	0.516	1.39
110	4"	9.961	4.842	2.008	006.0110.11	6311040	0.394	0.591	2.65

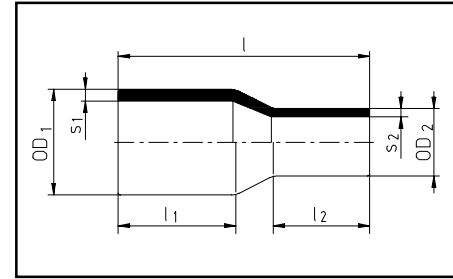
# PolyPure Extended Tee

- IR/Butt Fusion
- Molded



OD		Dimensions			PN 10 / ISO S-5 / SDR 11			
[mm]	[inch]	l	z	l <sub>3</sub>	Agru Code	Asahi Part #	s	Weight (lbs)
20	½"	4.291	2.126	1.417	006.0020.11	6319005	0.098	0.04
25	¾"	4.606	2.323	1.575	006.0025.11	6319007	0.106	0.07
32	1"	5.669	2.795	1.772	006.0032.11	6319010	0.114	0.09

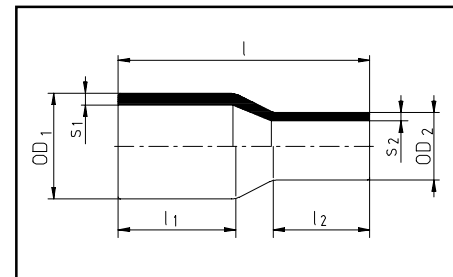
# PolyPure Extended Leg Concentric Reducer



- IR/Butt Fusion
- Molded

OD		Dimensions			PN 10 / ISO S-5 / SDR 11				
[mm]	[inch]	$l_1$	$l_2$	$l$	Agru Code	Asahi Part #	$s_1$	$s_2$	Weight (lbs)
25 / 20	¾ x ½	1.575	1.614	3.425	067.2520.11	6338101	0.118	0.118	0.04
32 / 20	1 x ½	1.732	1.535	3.740	067.3220.11	6338130	0.118	0.118	0.07
32 / 25	1 x ¾	1.772	1.575	3.740	067.3225.11	6338131	0.118	0.118	0.07
50 / 25	1½ x ¾	2.244	1.811	4.724	067.5025.11	6338210	0.181	0.118	0.13
50 / 32	1½ x 1	2.323	1.811	4.803	067.5032.11	6338211	0.181	0.118	0.15
63 / 32	2 x 1	2.520	1.929	5.354	067.6332.11	6338249	0.228	0.118	0.22
63 / 50	2 x 1½	2.598	2.323	5.945	067.6350.11	6338251	0.228	0.181	0.31

# PolyPure Extended Leg Concentric Reducer

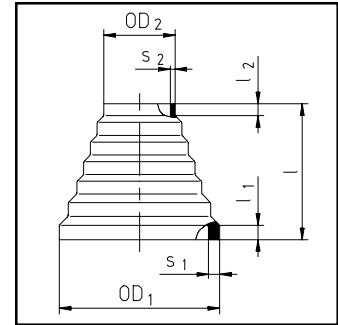


- IR/Butt Fusion
- Fabricated

OD		Dimensions			PN 10 / ISO S-5 / SDR 11				
[mm]	[inch]	$l_1$	$l_2$	$l$	Agru Code	Asahi Part #	$s_1$	$s_2$	Weight (lbs)
40 / 25	1¼ x ¾	2.00	2.00	4.71	067.2520.11	6338101	0.146	0.118	C.F.
40 / 32	1¼ x 1	2.00	2.00	4.71	067.3220.11	6338130	0.146	0.118	C.F.
90 / 63	3 x 2	2.80	2.48	6.26	067.3225.11	6338131	0.323	0.228	C.F.
110 / 63	4 x 2	3.27	2.28	7.05	067.5025.11	6338210	0.394	0.228	C.F.
110 / 90	4 x 3	3.23	3.11	7.09	067.5032.11	6338211	0.394	0.323	C.F.

# PolyPure Concentric Reducer

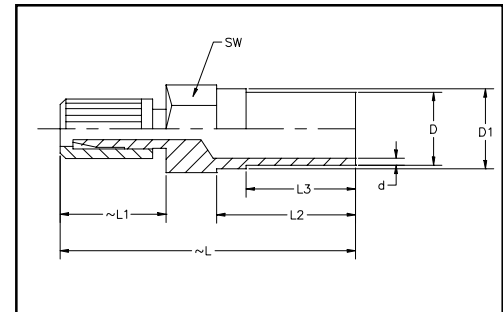
- IR/Butt Fusion
- Molded



OD		Dimensions			PN 10 / ISO S-5 / SDR 11		
[mm]	[inch]	l	s <sub>1</sub>	s <sub>2</sub>	Agru Code	Asahi Part #	Weight (lbs)
63 / 16	2 x 3/8	2.126	0.228	0.071	007.6316.11	6337247	0.03
110 / 63	4 x 2	2.480	0.394	0.228	007.1163.11	6337420	0.14

# PolyPure Flare Adapter

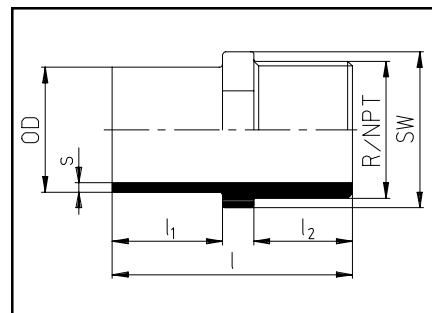
- IR/Butt Fusion
- Molded Tube Flare x Butt Transition Fitting



OD		Dimensions					PN 10 / ISO S-5 / SDR 11	
D [mm]	Flare [inch]	L <sub>1</sub>	L <sub>2</sub>	L <sub>3</sub>	L	SW	Asahi Part #	d
20	1/4"	1.142	1.500	1.181	3.190	0.945	6306096	0.098
20	3/8"	1.260	1.500	1.181	3.310	0.945	6306098	0.098
20	1/2"	1.260	1.500	1.181	3.400	1.063	6306005	0.098
25	3/8"	1.260	1.500	1.181	3.360	1.181	6306106	0.106
25	1/2"	1.300	1.500	1.181	3.400	1.181	6306101	0.106
25	3/4"	1.456	1.500	1.181	3.560	1.181	6306007	0.106
32	3/8"	1.260	1.500	1.181	3.390	1.614	6306105	0.114
32	1/2"	1.260	1.500	1.181	3.430	1.614	6306130	0.114
32	3/4"	1.456	1.500	1.181	3.590	1.614	6306131	0.114
32	1"	1.732	1.500	1.181	3.860	1.614	6306010	0.114

# PolyPure Male Adapter

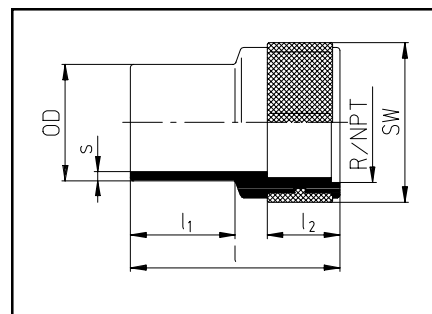
- IR/Butt Fusion
- Machined, NPT Adapter



OD		Dimensions						PN 10 / ISO S-5 / SDR 11		
[mm]	[inch]	s	l	l <sub>1</sub>	l <sub>2</sub>	SW	NPT Thd	Agro Code	Asahi Part #	Weight (lbs)
20	¾"	0.098	1.810	0.826	0.782	1.810	½"	N/A	6347005	C.F
25	¾"	0.106	2.010	0.984	0.794	2.010	¾"	N/A	6347007	C.F
32	1"	0.114	2.400	1.181	0.985	2.400	1"	N/A	6347010	C.F
40	1¼"	0.146	2.600	1.181	1.008	2.600	1¼"	N/A	6347012	C.F
50	1½"	0.181	2.920	1.338	1.023	2.920	1½"	N/A	6347015	C.F
63	2"	0.228	3.150	1.417	1.058	3.150	2"	N/A	6347020	C.F

# PolyPure Female Adapter

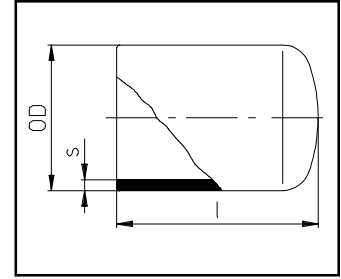
- IR/Butt Fusion
- Machined, NPT Adapter



OD		Dimensions						PN 10 / ISO S-5 / SDR 11		
[mm]	[inch]	s	l	l <sub>1</sub>	l <sub>2</sub>	SW	NPT Thd	Agro Code	Asahi Part #	Weight (lbs)
20	¾"	0.098	1.770	0.826	0.782	1.810	½"	N/A	6349005	C.F
25	¾"	0.106	1.960	0.984	0.794	2.010	¾"	N/A	6349007	C.F
32	1"	0.114	2.280	1.181	0.985	2.400	1"	N/A	6349010	C.F
40	1¼"	0.146	2.440	1.181	1.008	2.600	1¼"	N/A	6349012	C.F
50	1½"	0.181	2.670	1.338	1.023	2.920	1½"	N/A	6349015	C.F
63	2"	0.228	2.950	1.417	1.058	3.150	2"	N/A	6349020	C.F

# PolyPure Male Adapter

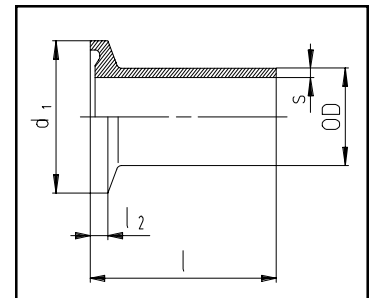
- IR/Butt Fusion
- Machined



OD		Dimensions		PN 10 / ISO S-5 / SDR 11		
[mm]	[inch]	l	s	Agru Code	Asahi Part #	Weight (lbs)
20	1/2"	1.50	0.098	N/A	6343005	C.F.
25	3/4"	1.50	0.106	N/A	6343007	C.F.
32	1"	1.50	0.118	N/A	6343010	C.F.
40	1 1/4"	1.50	0.142	N/A	6343012	C.F.
50	1 1/2"	1.50	0.181	N/A	6343015	C.F.
63	2"	1.50	0.228	N/A	6343020	C.F.
90	3"	1.50	0.323	N/A	6343030	C.F.
110	4"	1.50	0.394	N/A	6343040	C.F.

# PolyPure Sanitary Adapter

- IR/Butt Fusion
- Machined, Sanitary Transition Fitting



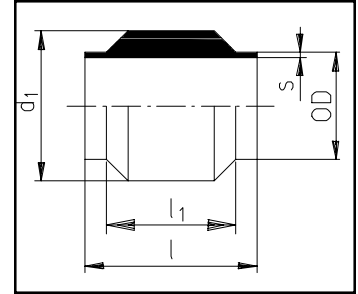
OD		Dimensions			PN 10 / ISO S-5 / SDR 11	
Butt [mm]	Clamp* [inch]	l <sub>2</sub>	l	d <sub>1</sub>	Asahi Part #	s
20	1/2"	0.142	1.500	0.984	6360005	0.098
25	1"	0.110	1.500	1.984	6360007	0.106
32	1 1/2"	0.110	1.500	1.984	6360010	0.114
40	1 1/2"	0.110	1.500	1.984	6360012	0.146
50	2"	0.110	1.500	2.490	6360015	0.181
63	2 1/2"	0.110	1.500	2.990	6360030	0.228

\*Clamp OD designates the closest Stainless Tube and Sanitary Clamp/Gasket Size which fitting mates to.



# PolyPure Instrumentation Fitting

- IR/Butt Fusion
- Machined



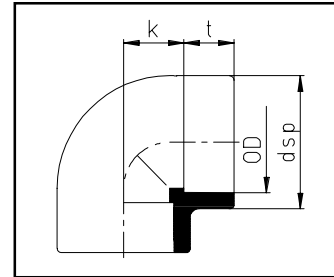
OD		Dimensions			PN 10 / ISO S-5 / SDR 11			
[mm]	[inch]	d <sub>1</sub>	l	l <sub>1</sub>	Agru Code	Asahi Part #	s (inch)	Weight (lbs)
20	½"	1.900	7.00	2.50	N/A	6304005	0.098	C.F.
25	¾"	2.360	7.00	3.00	N/A	6304007	0.106	C.F.
32	1"	2.650	7.00	3.00	N/A	6304010	0.114	C.F.
40	1¼"	3.060	7.00	3.00	N/A	6304012	0.146	C.F.
50	1½"	3.300	7.00	3.00	N/A	6304015	0.181	C.F.
63	2"	3.800	7.00	3.00	N/A	6304020	0.228	C.F.
90	3"	4.480	7.00	3.00	N/A	6304030	0.323	C.F.
110	4"	5.000	7.00	3.00	N/A	6304040	0.394	C.F.

- All Instrumentation Fittings are available with single or multiple threaded tap configurations to accommodate sampling and monitoring valves and probes. Please consult factory for details.

PolyPure®, Natural Polypropylene

# PolyPure Socket 90

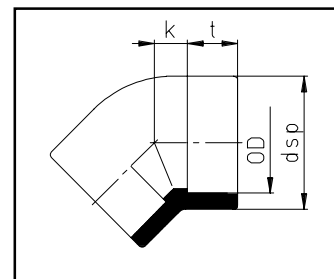
- Socket Fusion
- Molded



OD		Dimensions			PN 10		
[mm]	[inch]	dsp	k	t	Agru Code	Asahi Part #	Weight (lbs)
20	½"	1.15	0.55	0.63	051.0020.07	6310005	0.04
25	¾"	1.38	0.67	0.71	051.0025.07	6310007	0.07
32	1"	1.70	0.79	0.79	051.0032.07	6310010	0.09
40	1¼"	2.10	0.98	0.87	051.0040.07	6310012	0.15
50	1½"	2.58	1.10	0.98	051.0050.07	6310015	0.26
63	2"	3.19	1.38	1.14	051.0063.07	6310020	0.49

# PolyPure Socket 45

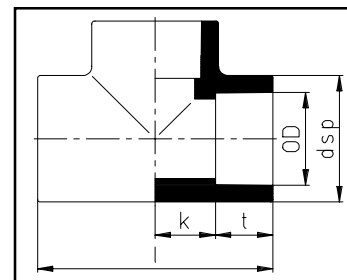
- Socket Fusion
- Molded



OD		Dimensions			PN 10		
[mm]	[inch]	dsp	k	t	Agru Code	Asahi Part #	Weight (lbs)
20	½"	1.18	0.43	0.63	050.0020.07	6315005	0.04
25	¾"	1.38	0.55	0.71	050.0025.07	6315007	0.04
32	1"	1.69	0.67	0.79	050.0032.07	6315010	0.09
40	1¼"	2.09	0.83	0.87	050.0040.07	6315012	0.13
50	1½"	2.56	1.02	0.94	050.0050.07	6315015	0.20
63	2"	3.19	1.30	1.14	050.0063.07	6315020	0.40

# PolyPure Socket Tee

- Socket Fusion
- Molded

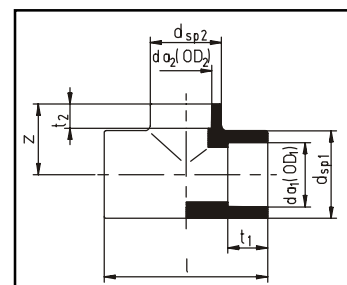


OD		Dimensions				PN 10		
[mm]	[inch]	dsp	l	k	t	Agru Code	Asahi Part #	Weight (lbs)
20	¾"	1.15	2.36	0.55	0.63	056.0020.07	6320005	0.07
25	¾"	1.39	2.76	0.67	0.71	056.0025.07	6320007	0.09
32	1"	1.69	3.23	0.83	0.79	056.0032.07	6320010	0.13
40	1¼"	2.09	3.70	0.98	0.87	056.0040.07	6320012	0.22
50	1½"	2.56	4.25	1.18	0.94	056.0050.07	6320015	0.35
63	2"	3.19	5.16	1.44	1.14	056.0063.07	6320020	0.66

PolyPure® Natural Polypropylene

# PolyPure Socket Reducing Tee\*

- Socket Fusion
- Molded

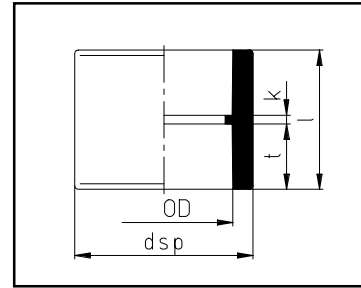


OD		Dimensions						PN 10		
[mm]	[inch]	dsp <sub>1</sub>	dsp <sub>2</sub>	t <sub>1</sub>	t <sub>2</sub>	l	z	Agru Code	Asahi Part #	Weight (lbs)
25/20	¾ x ½	1.37	1.18	0.71	0.63	2.70	1.26	055.2520.07	6324101	0.09
32/20	1 x ½	1.69	1.18	0.79	0.63	3.14	1.57	055.3220.07	6324130	0.11
32/25	1 x ¾	1.69	1.38	0.79	0.71	3.13	1.57	055.3225.07	6324131	0.13
40/25	1¼ x ¾	2.09	1.39	0.87	0.71	3.56	1.84	055.4025.07	6324167	0.18
40/32	1¼ x 1	2.09	1.69	0.87	0.79	3.58	1.77	055.4032.07	6324168	0.22
50/25	1½ x ¾	2.58	1.40	0.94	0.71	4.33	2.01	055.5025.07	6324210	0.35
50/32	1½ x 1	2.56	1.69	0.94	0.79	4.21	2.07	055.5032.07	6324211	0.37
63/32	2 x 1	3.19	1.71	1.14	0.79	5.12	2.56	055.6332.07	6324249	0.60
63/50	2 x 1½	3.19	2.60	1.14	0.94	5.12	2.56	055.6350.07	6324250	0.62

\*Reducing Tee's may be subject to minimum order quantities and extended lead times.

# PolyPure Socket Coupling

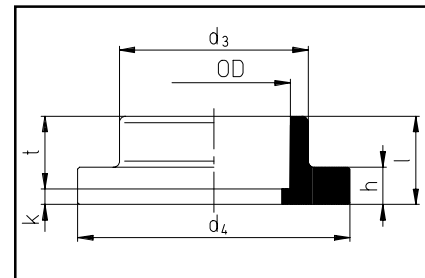
- Socket Fusion
- Molded



OD		Dimensions				PN 10		
[mm]	[inch]	dsp	l	k	t	Agru Code	Asahi Part #	Weight (lbs)
20	½"	1.157	1.378	0.118	0.630	053.0020.07	6328005	0.02
25	¾"	1.382	1.535	0.118	0.709	053.0025.07	6328007	0.04
32	1"	1.701	1.693	0.118	0.787	053.0032.07	6328010	0.07
40	1¼"	2.039	1.850	0.118	0.866	053.0040.07	6328012	0.09
50	1½"	2.535	2.047	0.157	0.945	053.0050.07	6328015	0.15
63	2"	3.201	2.441	0.157	1.142	053.0063.07	6328020	0.26

# PolyPure Socket Stub End

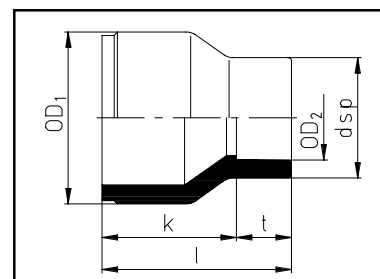
- Socket Fusion
- Molded



OD		Dimensions						PN 10		
[mm]	[inch]	d <sub>3</sub>	d <sub>4</sub>	h	l	k	t	Agru Code	Asahi Part #	Weight (lbs)
20	½"	1.06	1.75	0.39	0.83	0.20	0.63	052.1020.07	6331005	0.09
25	¾"	1.30	2.13	0.39	0.91	0.20	0.71	052.1025.07	6331007	0.11
32	1"	1.61	2.50	0.39	1.02	0.24	0.79	052.1032.07	6331010	0.13
40	1¼"	1.97	2.81	0.41	1.02	0.16	0.87	052.1040.07	6331012	0.35
50	1½"	2.42	3.25	0.51	1.18	0.24	0.94	052.1050.07	6331015	0.37
63	2"	3.02	3.95	0.55	1.34	0.20	1.14	052.1063.07	6331020	0.60

# PolyPure Socket Concentric Reducer

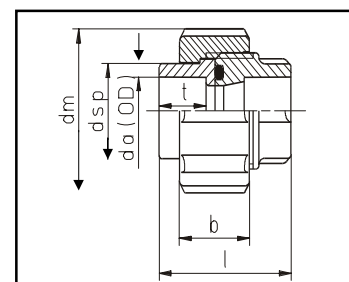
- Socket Fusion
- Molded



OD		Dimensions				PN 10		
[mm]	[inch]	dsp	t	k	l	Agru Code	Asahi Part #	Weight (lbs)
25/20	¾ x ½	1.18	0.63	0.91	1.54	057.2520.07	6339101	0.02
32/20	1 x ½	1.18	0.63	1.16	1.79	057.3220.07	6339130	0.04
32/25	1 x ¾	1.38	0.71	1.06	1.77	057.3225.07	6339131	0.04
40/32	1¼ x 1	1.69	0.79	1.18	1.97	057.4032.07	6339168	0.07
50/32	1½ x 1	1.72	0.79	1.38	2.17	057.5032.07	6339211	0.07
63/32	2 x 1	1.69	0.79	1.77	2.56	057.6332.07	6339249	0.13
63/40	2 x 1¼	2.08	0.87	1.69	2.56	057.6340.07	6339250	0.15
63/50	2 x 1½	2.55	0.94	1.61	2.56	055.6350.07	6339251	0.15

# PolyPure Socket T-24 Union

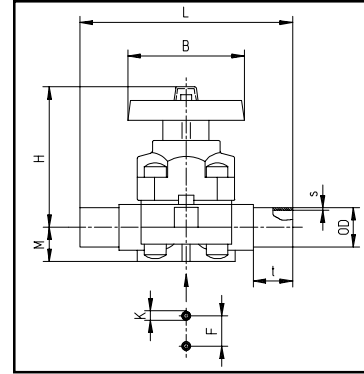
- Socket Fusion
- Molded, EPDM O'Ring



OD		Dimensions					PN 10		
[mm]	[inch]	dsp	l	t	dm	b	Agru Code	Asahi Part #	Weight (lbs)
20	½"	1.07	1.77	0.63	1.85	0.94	024.1020.07	6393005	0.21
25	¾"	1.41	1.93	0.71	2.24	1.02	024.1025.07	6393007	0.27
32	1"	1.63	2.09	0.77	2.52	1.18	024.1032.07	6393010	0.32
40	1¼"	2.08	2.32	0.89	3.07	1.22	024.1040.07	6393012	0.43
50	1½"	2.31	2.64	0.96	3.50	1.38	024.1050.06	6393015	0.66
63	2"	2.90	3.11	1.12	4.29	1.54	024.1063.07	6393020	0.89

# PolyPure Type 342 Diaphragm Valve

- IR / Butt Fusion
- Manual Diaphragm Valve  
EPDM Backed PTFE Diaphragm

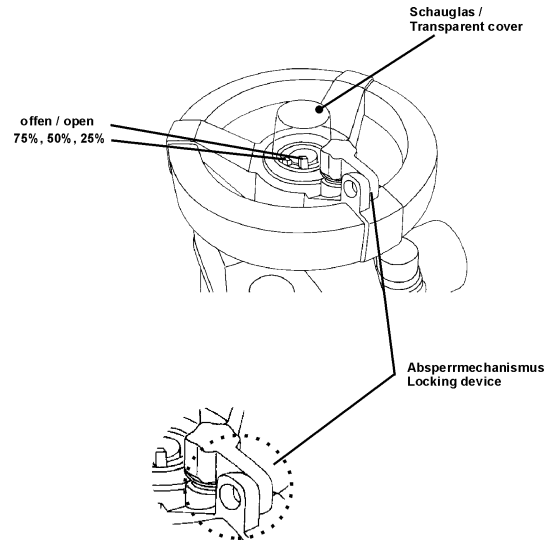


OD		Dimensions										PN 10 / ISO S-5 / SDR 11		
[mm]	[inch]	DN	s	t	B	H	M	F	K	L	Agru Code	Asahi Part #	Weight (lbs)	
20	1/2"	15	0.098	1.417	3.346	3.937	0.650	0.965	M6	5.236	342.1520.11	6351005	0.86	
25	3/4"	20	0.106	1.417	3.346	3.937	0.650	0.965	M6	5.669	342.1525.11	6351007	0.90	
32	1"	25	0.114	1.417	3.346	4.213	0.787	0.965	M6	6.063	342.1532.11	6351010	1.32	
40	1 1/4"	32	0.146	1.811	5.315	5.669	1.240	1.713	M8	7.598	342.1540.11	6351012	3.13	
50	1 1/2"	40	0.181	1.811	5.315	5.669	1.240	1.713	M8	7.638	342.1550.11	6351015	3.09	
63	2"	50	0.228	1.811	5.315	6.693	1.516	1.713	M8	8.819	342.1563.11	6351020	4.61	

OD		Cv at Percent (%) Open			
[mm]	[inch]	25%	50%	75%	100%
20	1/2"	2.52	4.00	4.76	5.04
25	3/4"	3.29	5.18	6.16	6.51
32	1"	7.70	12.32	14.70	15.47
40	1 1/4"	15.75	25.06	29.96	31.50
50	1 1/2"	17.50	28.00	33.25	35.00
63	2"	30.66	48.65	58.17	61.25

### Unique Handle Design:

- Integral Locking Handle can be locked in multiple positions to prevent unauthorized cycling
- Locking Handle spring loaded for easy locking/unlocking
- Position indication for 25%, 50% and 75% open positions

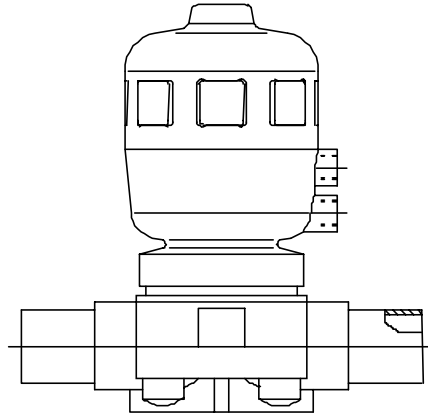


# PolyPure Type 342 Diaphragm Valve Options

## ● Pneumatic Actuators

For Type 342 Valves

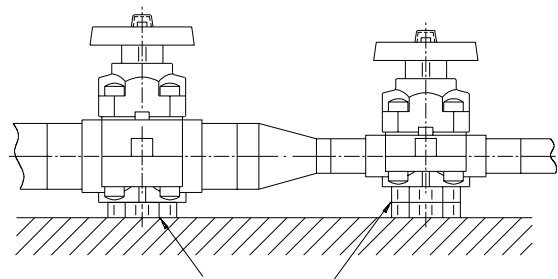
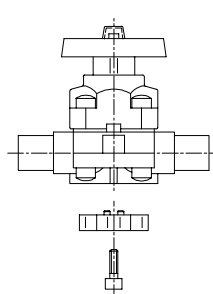
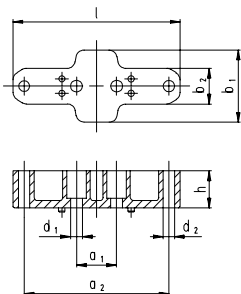
Available Normally Open, Normally Closed or Double Acting



## ● Mounting Plates

For Type 342 Valves

Converts Diaphragm Valves to Fixed Anchors



Single or Multiple Mounting Pad Installation

*Please consult factory for additional details on listed options*

