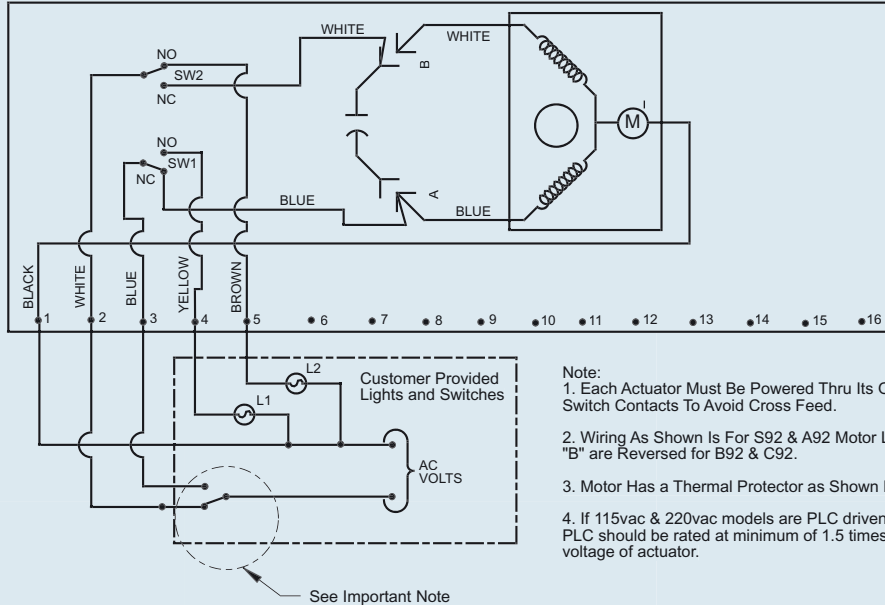


Series 92 & 94 Wiring Schematics

Wiring Diagram for AC Units

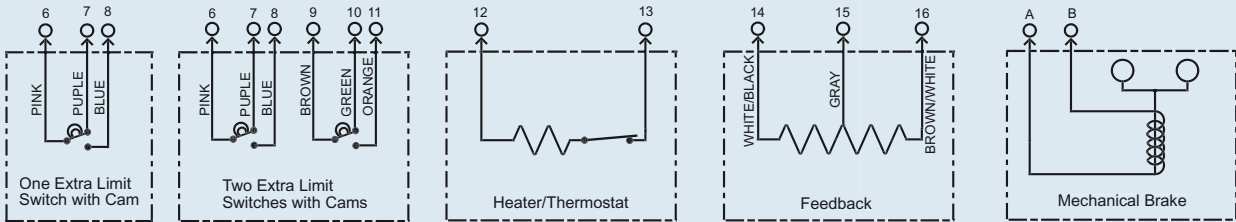
Actuator Shown is Counter-Clockwise Extreme of Travel, or "Open" Position



- Note:
1. Each Actuator Must Be Powered Thru Its Own Individual Switch Contacts To Avoid Cross Feed.
 2. Wiring As Shown Is For S92 & A92 Motor Leads at "A" And "B" are Reversed for B92 & C92.
 3. Motor Has a Thermal Protector as Shown By (M) in Diagram.
 4. If 115vac & 220vac models are PLC driven, output contacts of PLC should be rated at minimum of 1.5 times required input voltage of actuator.

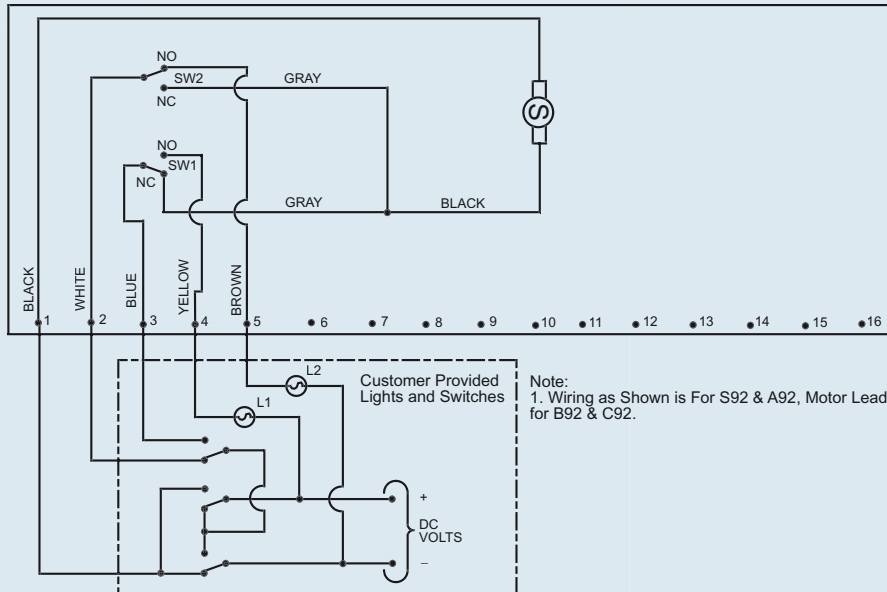
See Important Note

Wiring for Optional Equipment



Wiring Diagram for DC Units

Actuator Shown is Counter-Clockwise Extreme of Travel, or "Open" Position

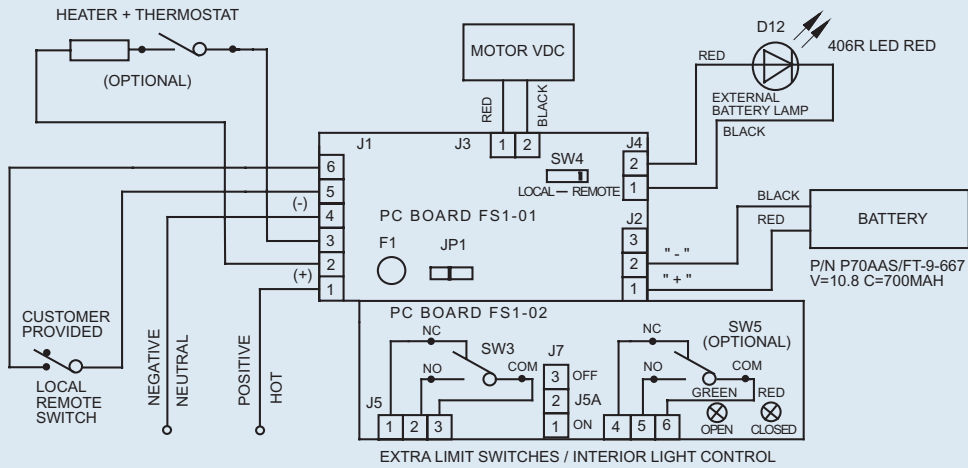


- Note:
1. Wiring as Shown is For S92 & A92, Motor Leads are Reversed for B92 & C92.

Series 92, 94 & 87 Wiring Schematics

Wiring Diagram for Series 92 & 94 with Protek Failsafe Battery Pack

Motor Leads at J3 reversed for B + C92



Wiring Diagram for Series 87 115/230VAC

