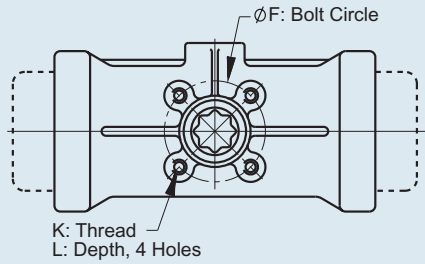
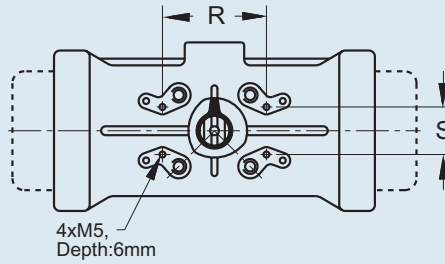


Pneumatic Actuators

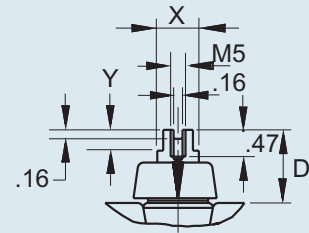
BOTTOM VIEW



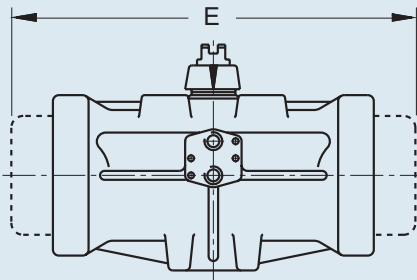
TOP VIEW



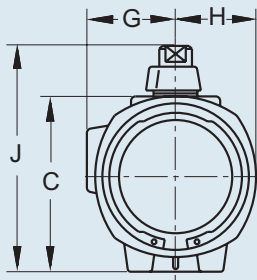
Top Output: NAMUR



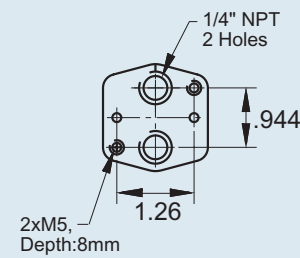
FRONT VIEW



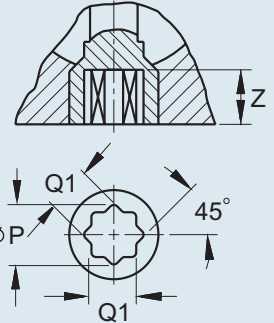
SIDE VIEW



Solenoid Pat: NAMUR



Bottom Output: DIN-3337



Dimensions (IN.)

Model	C	D	E		F	G	H	J	K	L	P	Q1	R	S	X	Y	Z
			A-A	AS													
A79P	2.56	0.78	4.29	5.65	1.65	1.47	1.22	3.35	5 mm	0.39	.55	0.433	3.15	1.18	0.31	0.29	0.53
B79P	3.15	1.18	4.92	6.30	1.96	1.73	1.42	4.33	6 mm	0.47	1.03	0.79	3.15	1.18	0.39	0.43	0.59
B579P	3.62	1.18	5.75	7.64	2.75	2.08	1.77	4.80	8 mm	0.47	1.26	0.95	3.15	1.18	0.39	0.43	0.59
C79P	3.82	1.18	7.16	9.29	2.75	2.16	1.85	5.00	8 mm	0.59	1.26	0.95	3.15	1.18	0.39	0.43	0.59
C579P	4.65	1.18	7.99	10.12	2.75	2.36	2.16	5.83	8 mm	0.59	1.26	0.95	3.15	1.18	0.39	0.43	0.59
D79P	5.16	1.18	9.21	12.28	2.75	2.64	2.36	6.34	8 mm	0.59	1.26	0.95	3.15	1.18	0.63	0.39	0.75
D579P	6.34	1.18	10.87	14.25	4.02	3.07	2.91	7.52	10 mm	0.79	1.57	1.18	3.15	1.18	0.63	0.39	1.18
E79P	7.13	1.18	13.74	18.86	4.02	3.70	3.27	8.31	10 mm	0.79	1.57	1.18	3.15	1.18	0.63	0.39	1.18
F79P	8.74	1.97	17.48	23.54	4.92	4.72	4.17	10.71	12 mm	0.79	1.93	1.42	5.12	1.18	1.26	0.83	1.50
G79P	10.35	1.97	20.63	27.32	5.51	5.31	4.82	12.32	16 mm	0.98	1.93	1.42	5.12	1.18	1.26	0.83	1.50

Air Consumption (Cubic Inches.)

Model No.	Air to Air		Air to Spring
	Open Port A	Close Port B	Air Stroke
A79P	4.58	3.05	4.58
B79P	9.15	6.10	9.15
B579P	17.00	15.25	17.00
C79P	21.35	19.52	21.35
C579P	39.66	33.56	39.66
D79P	48.82	42.72	48.82
D579P	91.54	79.33	91.54
E79P	125.10	115.95	125.10
F79P	323.43	219	323.43
G79P	640.75	427.17	640.75

Cycle Time (Seconds per Stroke)

Model No.	Air to Air		Air to Spring	
	Open Port A	Close Port B	Open Port A	Close Port B
A79P	0.10	0.10	0.15	0.30
B79P	0.15	0.15	0.20	0.40
B579P	0.20	0.20	0.40	0.80
C79P	0.25	0.25	0.60	1.10
C579P	0.30	0.30	1.00	1.50
D79P	0.40	0.40	1.70	2.00
D579P	0.50	0.50	2.70	3.90
E79P	0.60	0.60	3.80	5.50
F79P	1.20	1.20	5.80	12.00
G79P	2.00	2.00	18.20	19.00

Weight (In Pounds)

Model No.	Aluminum		PAG *		316 SS	
	A-A	A-S	A-A	A-S	A-A	A-S
A79P	1.0	1.3	0.73	1.1	N/A	N/A
B79P	2.2	2.8	1.7	2.3	3.9	5.1
B579P	3.3	5.1	N/A	N/A	N/A	N/A
C79P	4.1	5.7	3.1	4.7	8.2	9.4
C579P	5.8	8.8	N/A	N/A	N/A	N/A
D79P	7.9	12.7	6.5	11	13.3	19
D579P	13	20.2	N/A	N/A	N/A	N/A
E79P	20	35	N/A	N/A	N/A	N/A
F79P	39	80.3	N/A	N/A	N/A	N/A
G79P	68	128.5	N/A	N/A	N/A	N/A

* Polyamide Glass Filled

Note: Actuator supplied with 80 psi, and no load